

# Cedar

BROCHURE 2024



# ITINZ

Innovative Timber Ideas

0800 ITI NZL



**CodeMark**   
CERTIFIED

Shift House by Studio2 Architects coated with Dryden Woodoil Ironsand



ITI NZ proudly supplies a time proven performer, Western red cedar which has a long history of use in New Zealand for both internal and external applications.

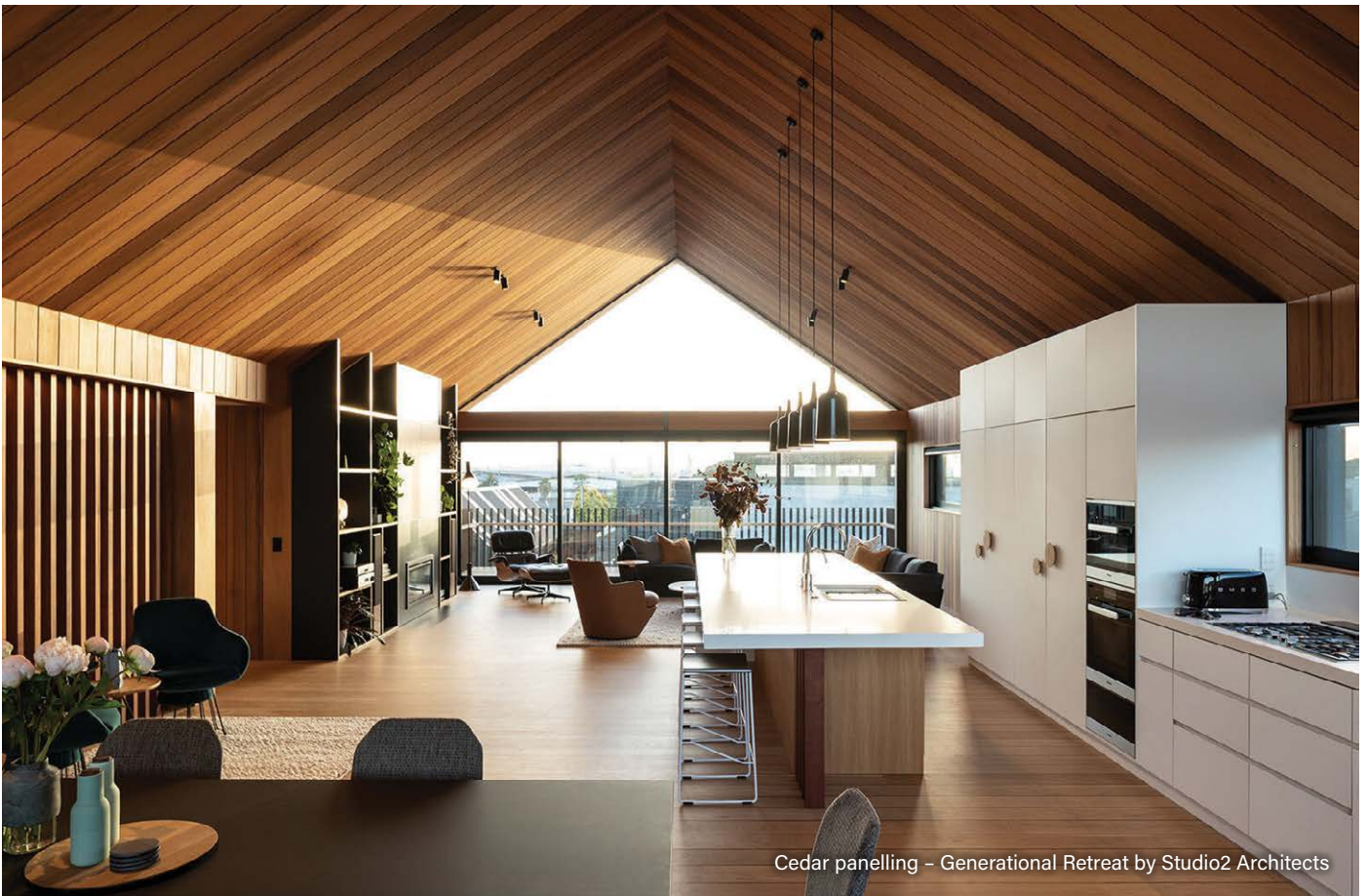
Loved by generations for its beautiful natural grain, soft warm colours and texture along with its pleasant natural fragrance, cedar is the first choice for many.

Western red cedar also offers a broad design scope and can be profiled into an endless number of profiles depending on the desired look. This range extends from internal linings, screens and trims to cladding and fascia.

In addition to the classic bevel back and rusticated cladding profiles, there is a large range of contemporary vertical and horizontal combinations available. Couple this with a wide selection of coatings and finishes to produce a look to complement any project.

A truly beautiful, versatile timber.

Cedar Ceiling and Soffit - #3 House by Studio2 Architects



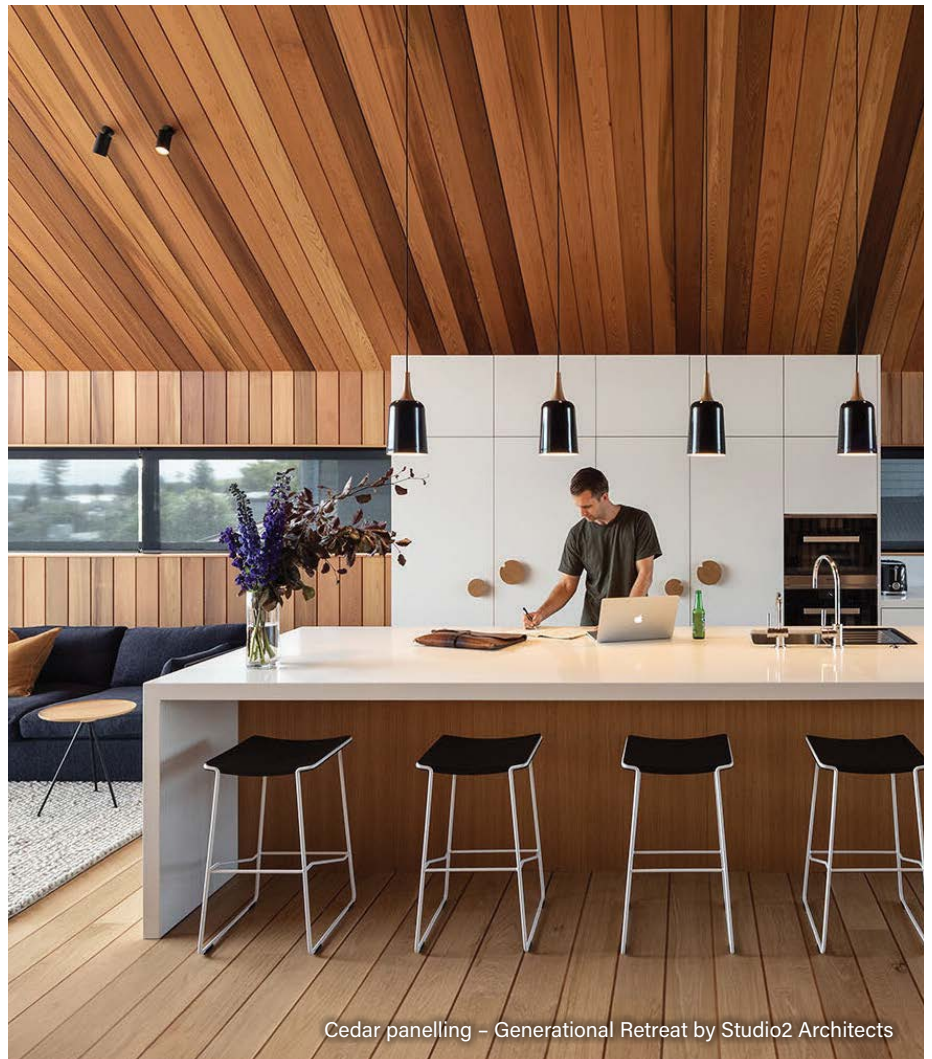
Cedar panelling – Generational Retreat by Studio2 Architects

# Cedar

ITI NZ cedar is sustainably harvested from the managed natural forests of British Columbia and Vancouver Island in Canada.

Graded in Canada prior to shipping, the timber is supplied here as clear or select tight knot (STK) grade.

In NZ it is air dried to acclimatise to local conditions and then profiled. This ensures the timber performs to its optimum in the local environment.



Cedar panelling – Generational Retreat by Studio2 Architects



# Cedar – many profiles and colours possible



**P55**  
Dryden Wood Oil  
Platinum



**P835**  
Dryden Wood Oil  
Dark



**P836**  
Dryden Wood Oil  
Dune



**P61**  
Dryden Wood Oil  
Copper



**P68**  
Dryden Wood Oil  
Oropo



**P52**  
Dryden Wood Oil  
Dryhills



**P56**  
Dryden Wood Oil  
Slate



**P62**  
Dryden Wood Oil  
Midnight

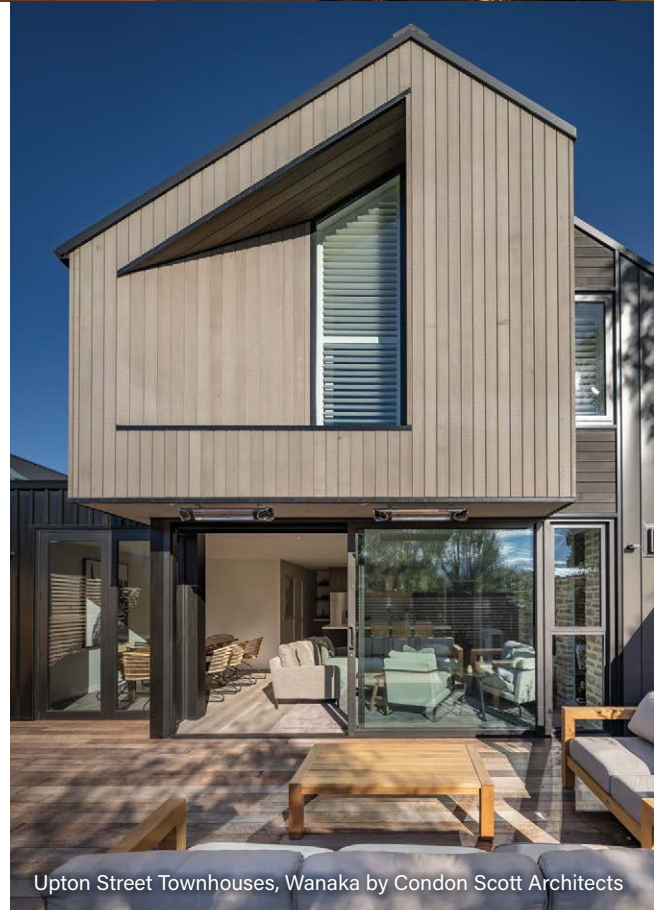




Shift House by Studio2 Architects

# Why use Cedar?

- Aesthetically attractive
- Naturally durable
- Wide range of profile options
- Wide range of coating options
- 15-year service life
- Easy to work
- Light weight
- Non-toxic
- Time proven



Upton Street Townhouses, Wanaka by Condon Scott Architects

# Care and Maintenance

Like all products exposed to the elements, cedar will need periodic maintenance and recoating to maintain the desired aesthetic and to ensure it performs to the optimum level.

Cedar in an exterior application will need annual washing to reduce the build-up of airborne pollutants and organic growth. Generally, this is carried out using a house pressure hose, and a mild detergent to remove surface

contaminants. Do not use pressure washers or water blasters as this will cause permanent damage to the surface fibres of the timber.

Stained or oiled cedar will need to be re-coated in accordance with the selected coating manufacturer's requirements. Ensure the timber is clean and dry before any application of the coating.



Cedar cladding by Cove Construction Design Build



Cedar panelling by Cove Construction Design Build



Cedar Soffit by Cove Construction Design Build



**Auckland**  
26 Keeling Road,  
Henderson 0612

**Carterton**  
30 Kent Street,  
Carterton 5713

**Christchurch**  
14 Braeburn Drive,  
Hornby 8042

0800 ITI NZL (484 695)

[sales@iti.net.nz](mailto:sales@iti.net.nz)

[www.iti.net.nz](http://www.iti.net.nz)

*ITI NZ accepts no responsibility for any errors, omissions, work completed or any consequence of reliance on this document. It is to be a guide only.*