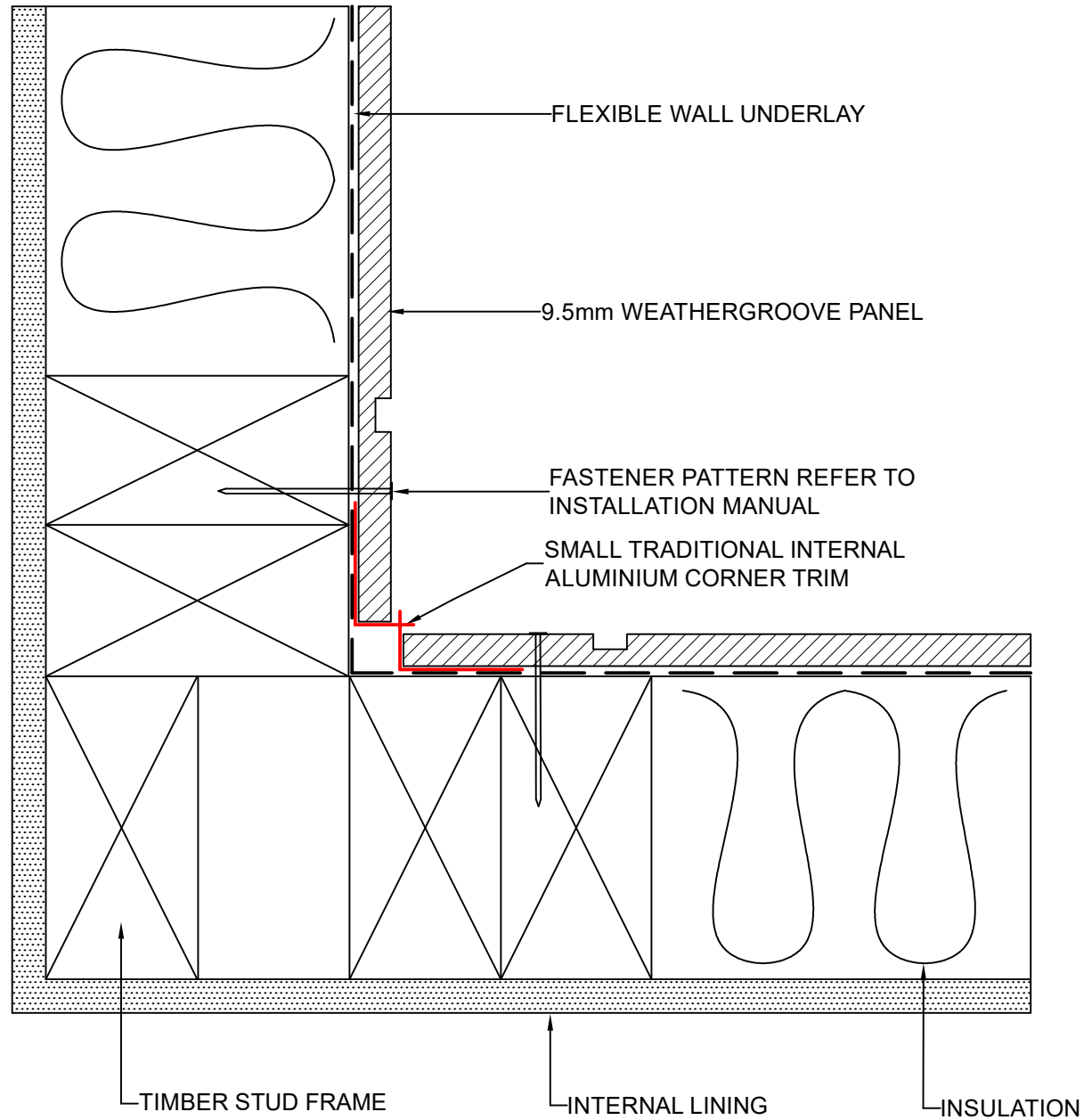


WEATHERTEX CONSTRUCTION DETAILS

WEATHERGROOVE PANELS

DIRECT FIX
CONSTRUCTION



These drawings are for information only. They do not contain full details required for construction and must be used in conjunction with the current issue Weathertex Installation Manual, New Zealand Building Code and Local Regulations. Weathertex recommends gaining professional advice to ensure the drawings are suitable for your project. Weathertex accepts no liability in respect to the use of these drawings.



DRAWING NAME:
DIRECT FIX INSTALLATION - SMALL INTERNAL CORNER
(WEATHERGROOVE RANGE)

SCALE:
NTS

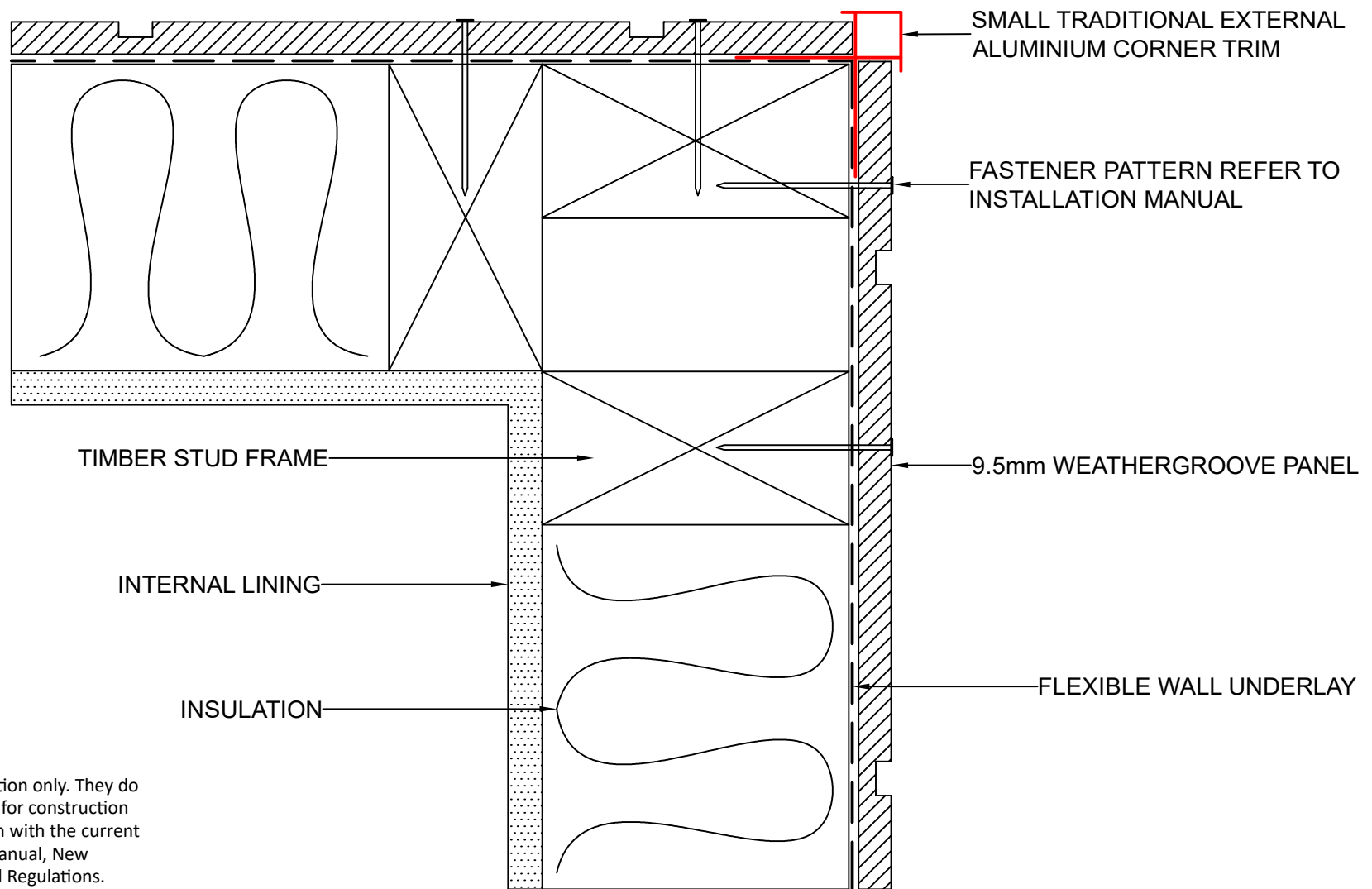
DRAWN BY:
A.MOATE

CHECKED BY:
R.STUART

DATE:
07.09.22

DRAWING No.:
NZ-WG-DF-1

SHT SIZE
A4



These drawings are for information only. They do not contain full details required for construction and must be used in conjunction with the current issue Weathertex Installation Manual, New Zealand Building Code and Local Regulations. Weathertex recommends gaining professional advice to ensure the drawings are suitable for your project. Weathertex accepts no liability in respect to the use of these drawings.



DRAWING NAME:
DIRECT FIX INSTALLATION - SMALL EXTERNAL CORNER
(WEATHERGROOVE RANGE)

SCALE:
NTS

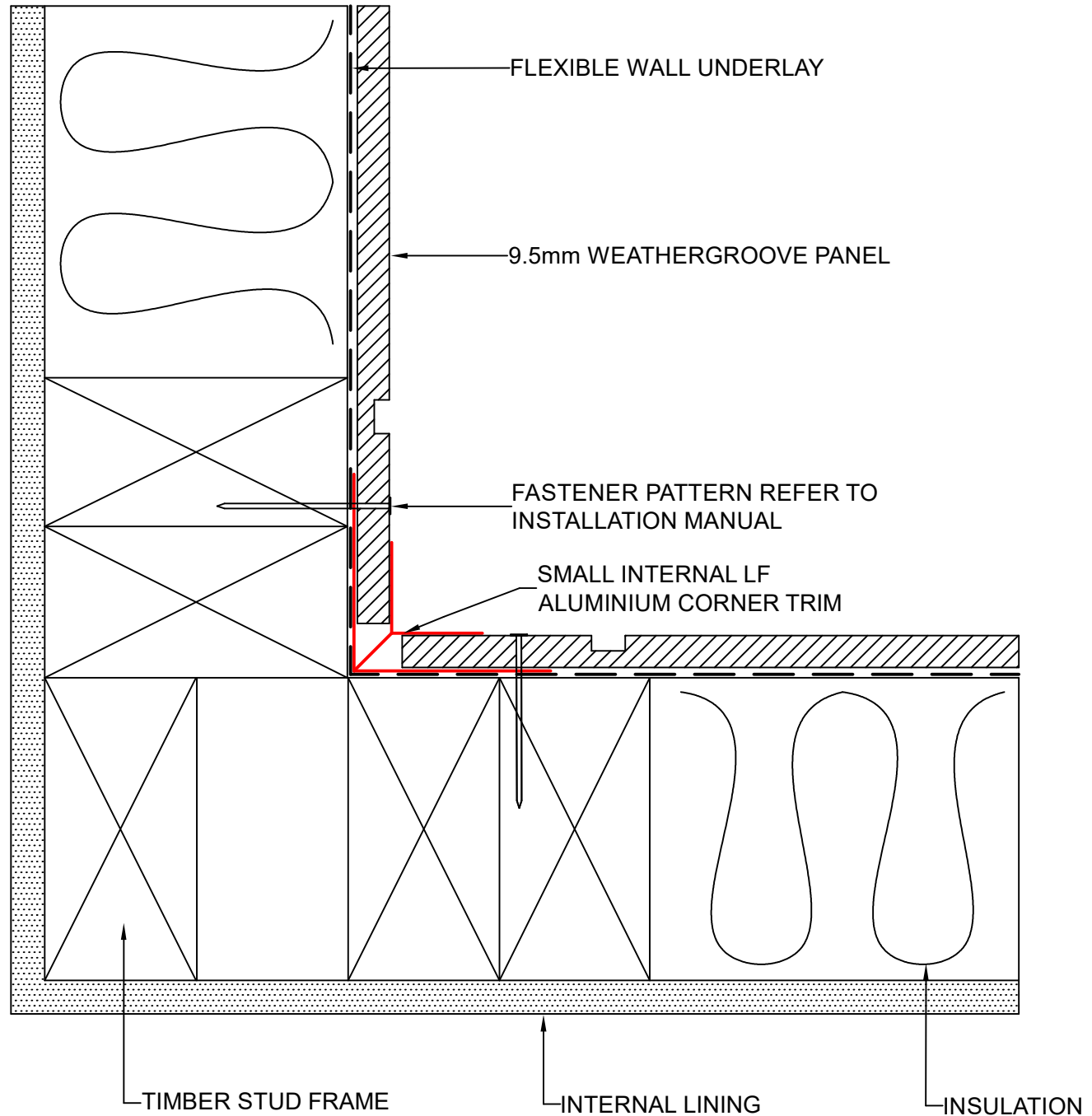
DRAWN BY:
A.MOATE

CHECKED BY:
R.STUART

DATE:
07.09.22

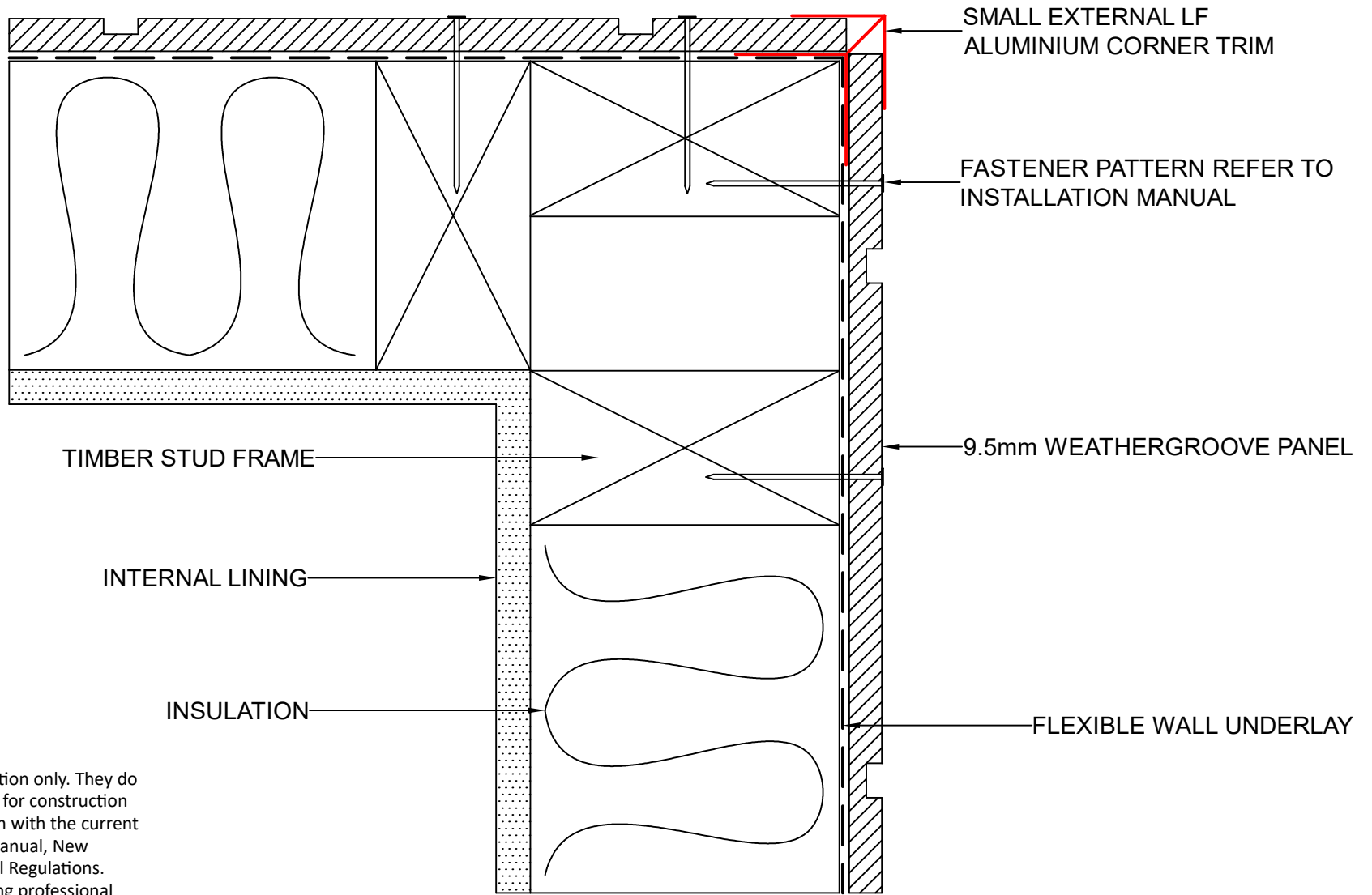
DRAWING No.:
NZ-WG-DF-2

SHT SIZE
A4



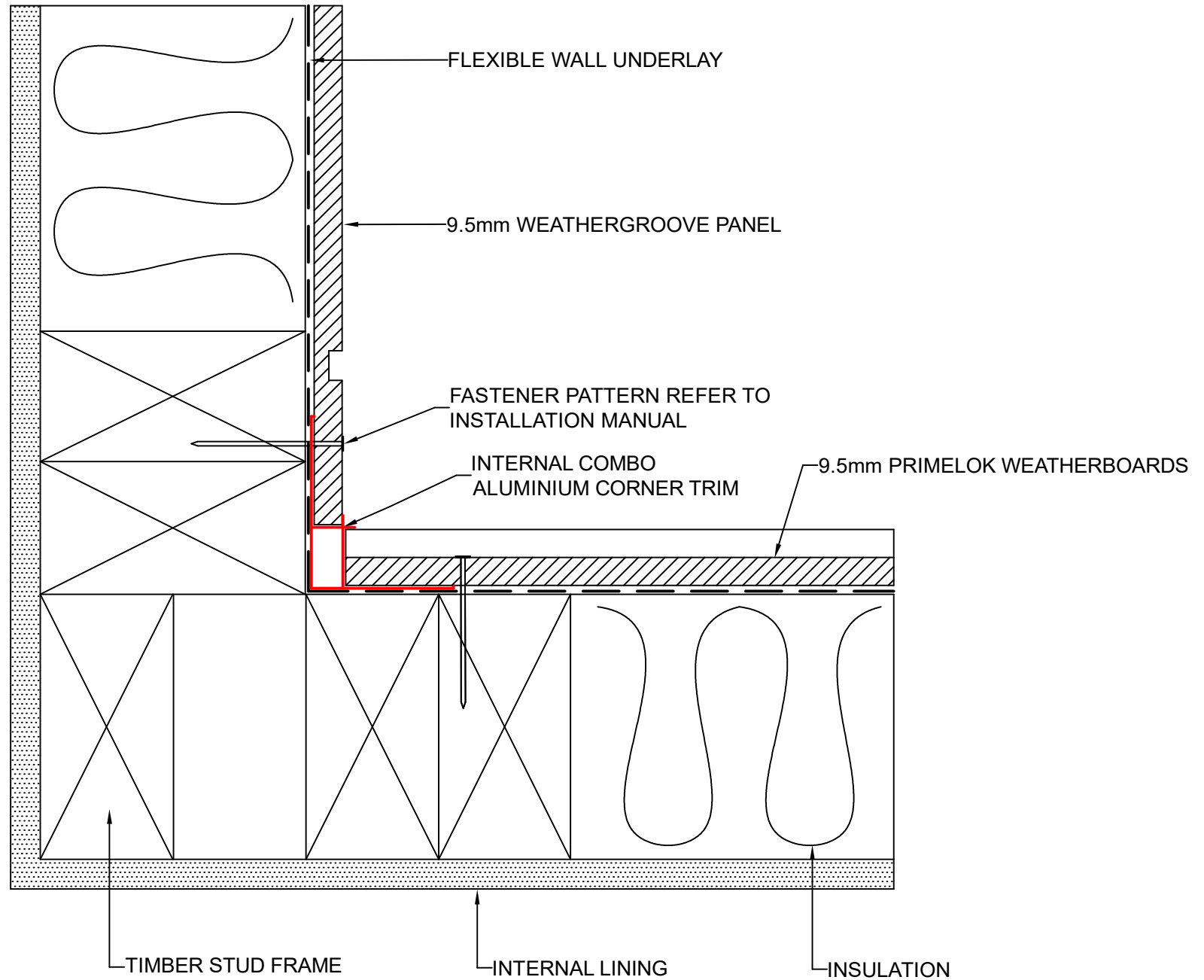
These drawings are for information only. They do not contain full details required for construction and must be used in conjunction with the current issue Weathertex Installation Manual, New Zealand Building Code and Local Regulations. Weathertex recommends gaining professional advice to ensure the drawings are suitable for your project. Weathertex accepts no liability in respect to the use of these drawings.

	DRAWING NAME:	SCALE:	DRAWN BY:	CHECKED BY:	DATE:	DRAWING No.:	SHT SIZE
	DIRECT FIX INSTALLATION - SMALL INTERNAL LF CORNER (WEATHERGROOVE RANGE)	NTS	A.MOATE	R.STUART	07.09.22	NZ-WG-DF-3	A4



These drawings are for information only. They do not contain full details required for construction and must be used in conjunction with the current issue Weathertex Installation Manual, New Zealand Building Code and Local Regulations. Weathertex recommends gaining professional advice to ensure the drawings are suitable for your project. Weathertex accepts no liability in respect to the use of these drawings.

	DRAWING NAME:	SCALE:	DRAWN BY:	CHECKED BY:	DATE:	DRAWING No.:	SHT SIZE
	DIRECT FIX INSTALLATION - SMALL EXTERNAL LF CORNER (WEATHERGROOVE RANGE)	NTS	A.MOATE	R.STUART	07.09.22	NZ-WG-DF-4	A4



These drawings are for information only. They do not contain full details required for construction and must be used in conjunction with the current issue Weathertex Installation Manual, New Zealand Building Code and Local Regulations. Weathertex recommends gaining professional advice to ensure the drawings are suitable for your project. Weathertex accepts no liability in respect to the use of these drawings.



DRAWING NAME:
DIRECT FIX INSTALLATION - INTERNAL COMBO CORNER
(WEATHERGROOVE RANGE)

SCALE:
NTS

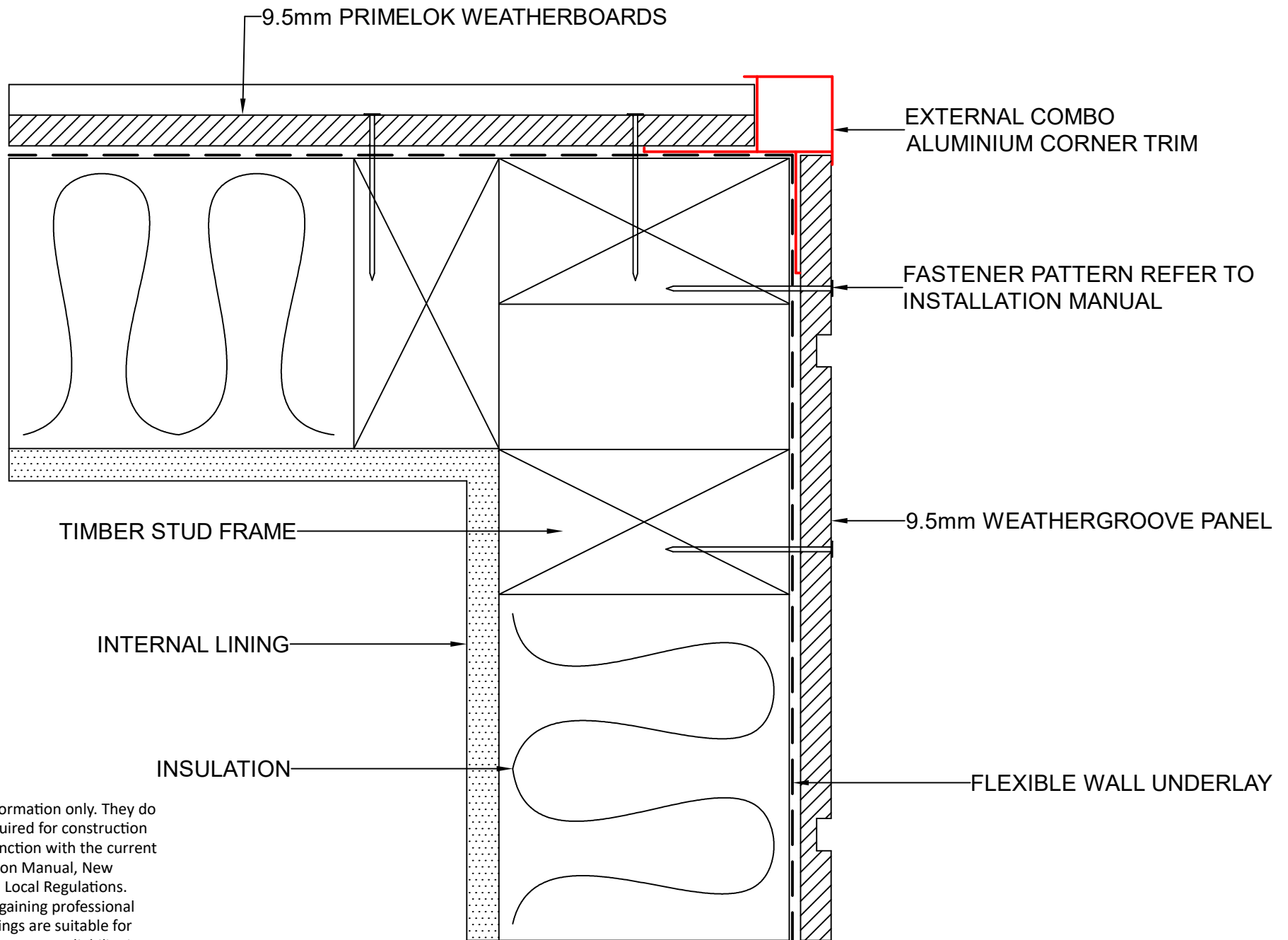
DRAWN BY:
A.MOATE

CHECKED BY:
R.STUART

DATE:
07.09.22

DRAWING No.:
NZ-WG-DF-5

SHT SIZE
A4



These drawings are for information only. They do not contain full details required for construction and must be used in conjunction with the current issue Weathertex Installation Manual, New Zealand Building Code and Local Regulations. Weathertex recommends gaining professional advice to ensure the drawings are suitable for your project. Weathertex accepts no liability in respect to the use of these drawings.



DRAWING NAME:
DIRECT FIX INSTALLATION - EXTERNAL COMBO CORNER
(WEATHERGROOVE RANGE)

SCALE:

NTS

DRAWN BY:

A.MOATE

CHECKED BY:

R.STUART

DATE:

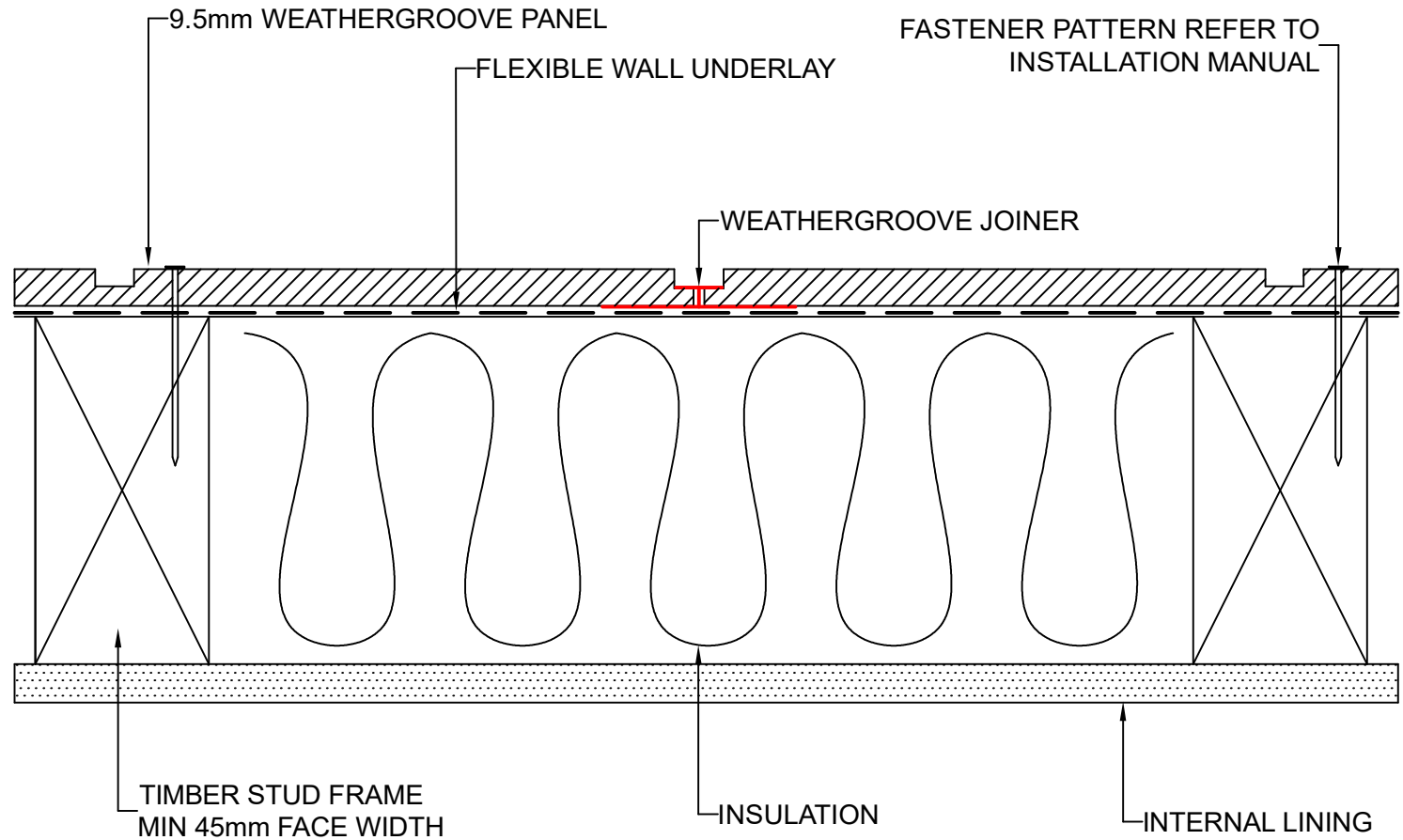
07.09.22

DRAWING No.:

NZ-WG-DF-6

SHT SIZE

A4



These drawings are for information only. They do not contain full details required for construction and must be used in conjunction with the current issue Weathertex Installation Manual, New Zealand Building Code and Local Regulations. Weathertex recommends gaining professional advice to ensure the drawings are suitable for your project. Weathertex accepts no liability in respect to the use of these drawings.



DRAWING NAME:
DIRECT FIX INSTALLATION - TRADITIONAL JOINING
(WEATHERGROOVE RANGE)

SCALE:
NTS

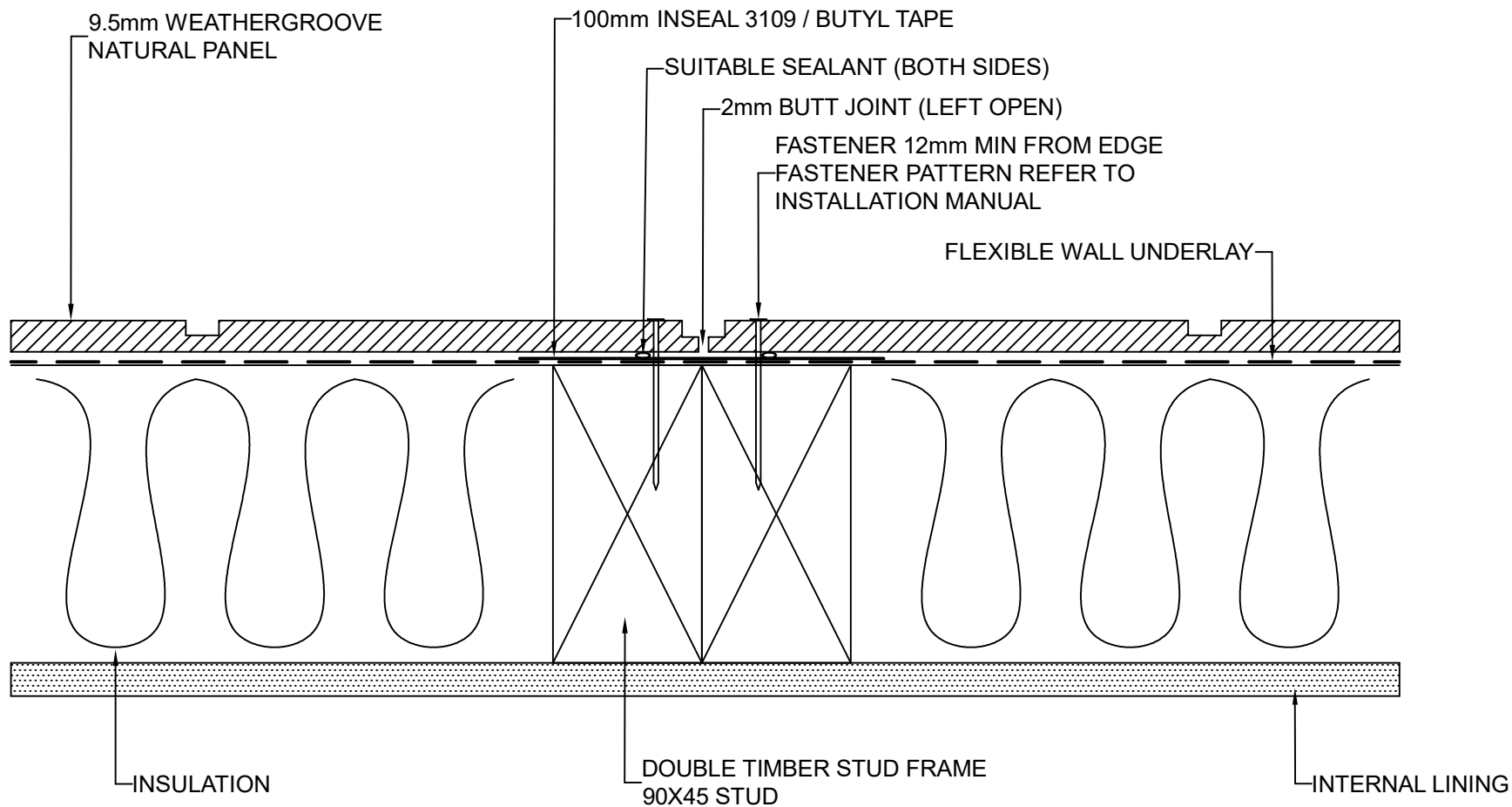
DRAWN BY:
A.MOATE

CHECKED BY:
R.STUART

DATE:
07.09.22

DRAWING No.:
NZ-WG-DF-7

SHT SIZE
A4



These drawings are for information only. They do not contain full details required for construction and must be used in conjunction with the current issue Weathertex Installation Manual, New Zealand Building Code and Local Regulations. Weathertex recommends gaining professional advice to ensure the drawings are suitable for your project. Weathertex accepts no liability in respect to the use of these drawings.



DRAWING NAME:
DIRECT FIX INSTALLATION - BUTT JOIN
(WEATHERGROOVE NATURAL RANGE)

SCALE:
NTS

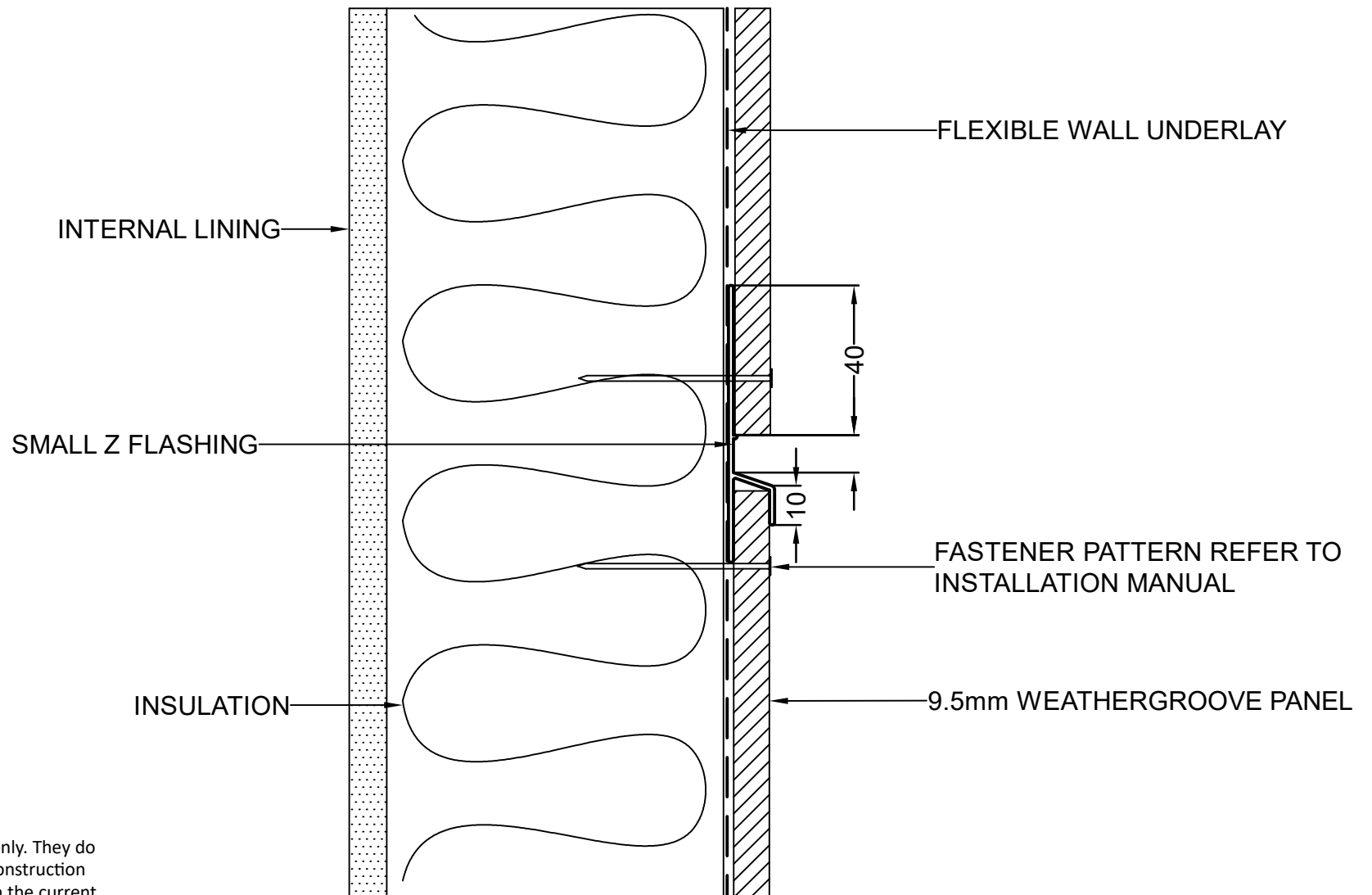
DRAWN BY:
A.MOATE

CHECKED BY:
R.STUART

DATE:
07.09.22

DRAWING No.:
NZ-WG-DF-8

SHT SIZE
A4



These drawings are for information only. They do not contain full details required for construction and must be used in conjunction with the current issue Weathertex Installation Manual, New Zealand Building Code and Local Regulations. Weathertex recommends gaining professional advice to ensure the drawings are suitable for your project. Weathertex accepts no liability in respect to the use of these drawings.



DRAWING NAME:
DIRECT FIX INSTALLATION - SMALL Z FLASHING
(WEATHERGROOVE RANGE)

SCALE:
NTS

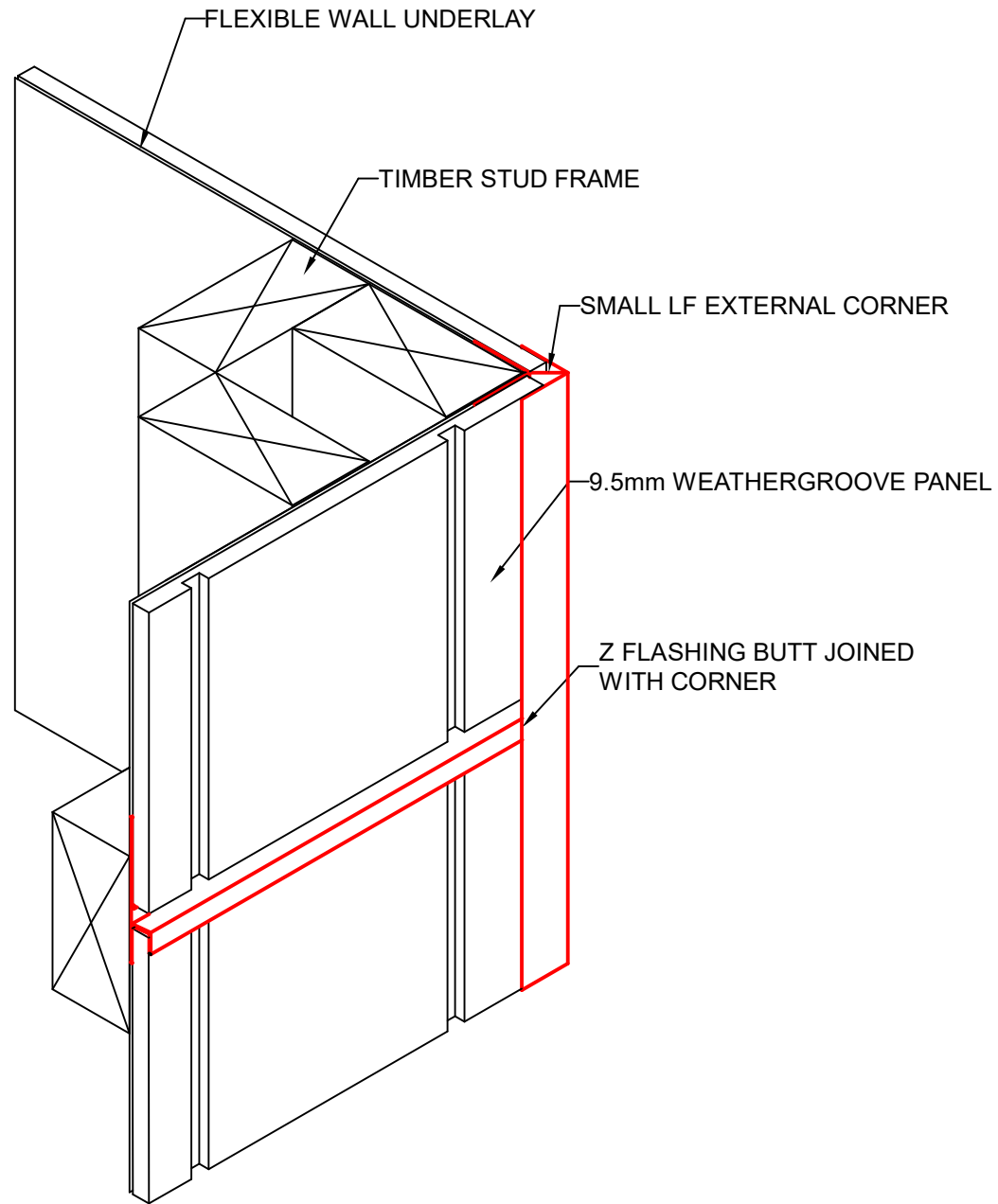
DRAWN BY:
A.MOATE

CHECKED BY:
R.STUART

DATE:
07.09.22

DRAWING No.:
NZ-WG-DF-9

SHT SIZE
A4



These drawings are for information only. They do not contain full details required for construction and must be used in conjunction with the current issue Weathertex Installation Manual, New Zealand Building Code and Local Regulations. Weathertex recommends gaining professional advice to ensure the drawings are suitable for your project. Weathertex accepts no liability in respect to the use of these drawings.



DRAWING NAME:
DIRECT FIX INSTALLATION - Z FLASHING INTO CORNER
(WEATHERGROOVE RANGE)

SCALE:
NTS

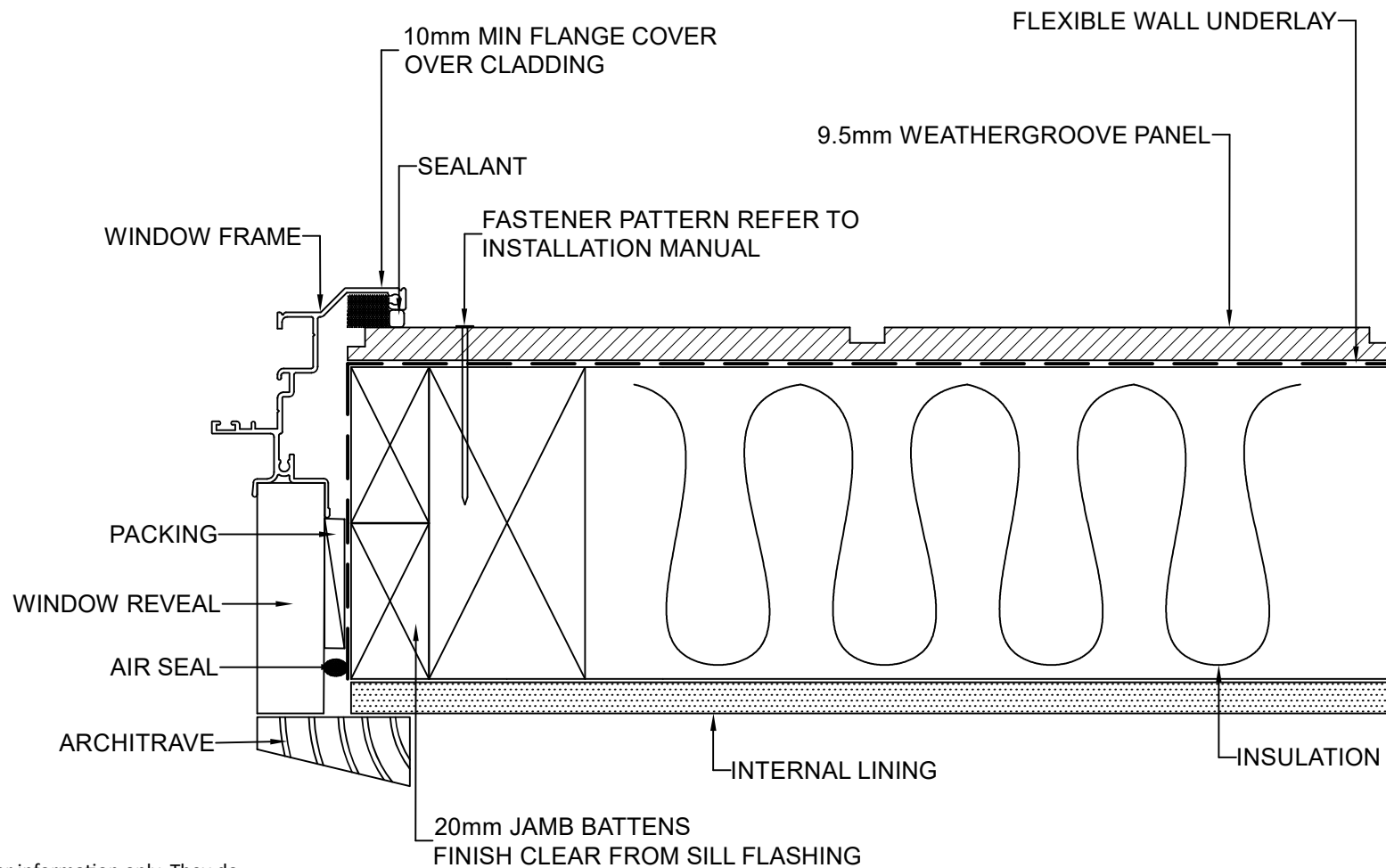
DRAWN BY:
A.MOATE

CHECKED BY:
R.STUART

DATE:
07.09.22

DRAWING No.:
NZ-WG-DF-10

SHT SIZE
A4



These drawings are for information only. They do not contain full details required for construction and must be used in conjunction with the current issue Weathertex Installation Manual, New Zealand Building Code and Local Regulations. Weathertex recommends gaining professional advice to ensure the drawings are suitable for your project. Weathertex accepts no liability in respect to the use of these drawings.



DRAWING NAME:
DIRECT FIX INSTALLATION - WINDOW JAMB
(WEATHERGROOVE RANGE)

SCALE:
NTS

DRAWN BY:
A.MOATE

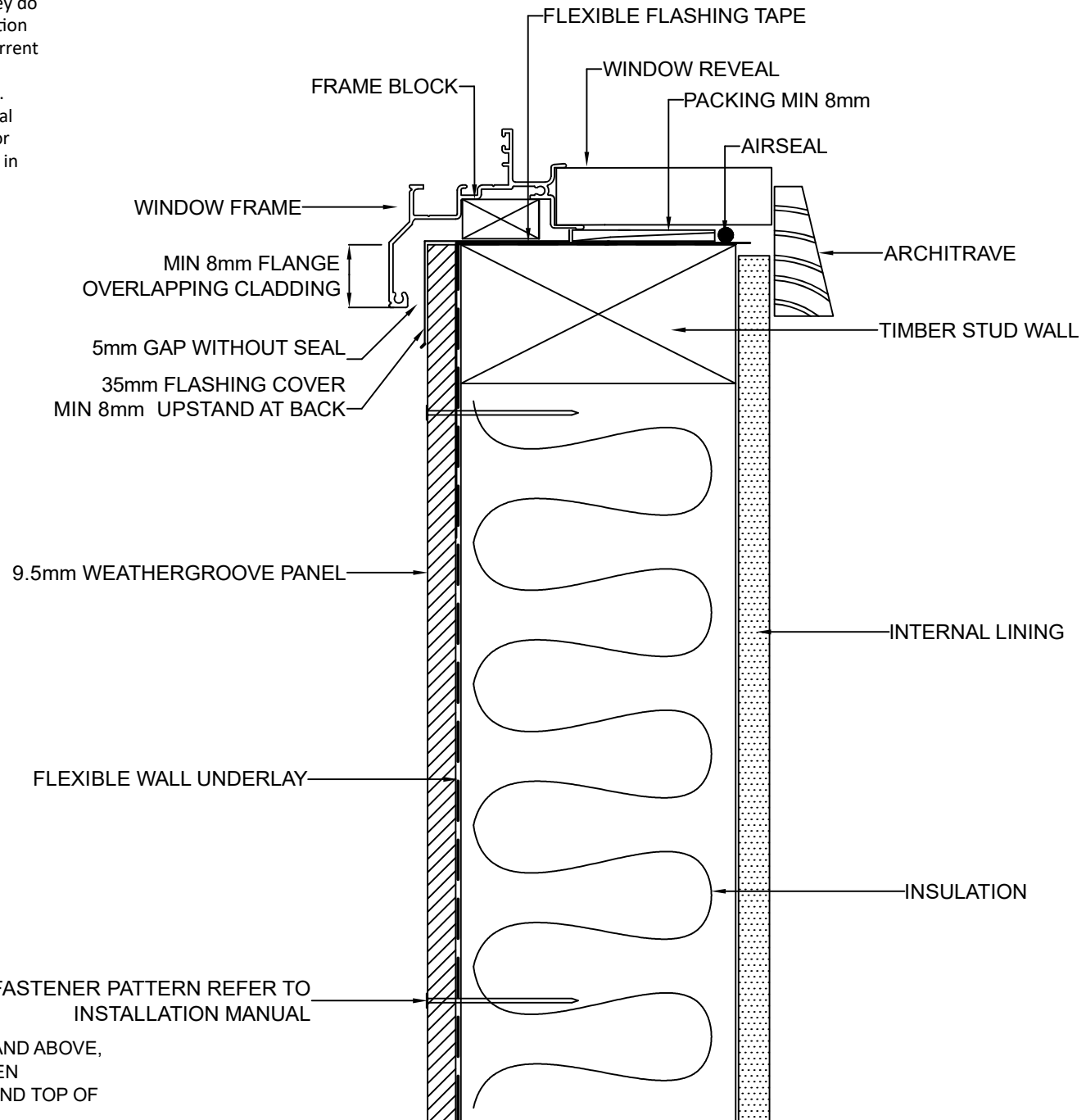
CHECKED BY:
R.STUART

DATE:
07.09.22

DRAWING No.:
NZ-WG-DF-11

SHT SIZE
A4

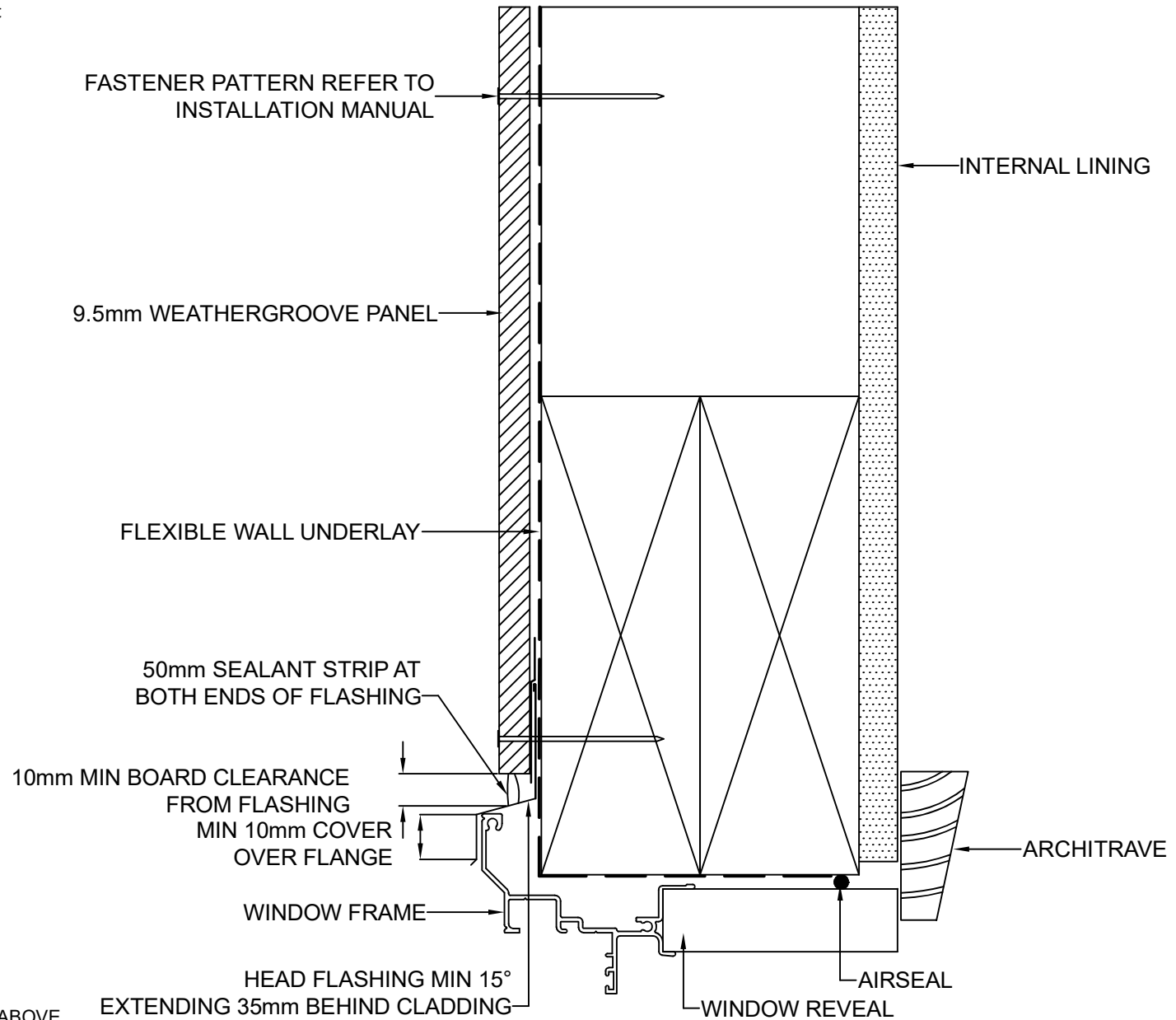
These drawings are for information only. They do not contain full details required for construction and must be used in conjunction with the current issue Weathertex Installation Manual, New Zealand Building Code and Local Regulations. Weathertex recommends gaining professional advice to ensure the drawings are suitable for your project. Weathertex accepts no liability in respect to the use of these drawings.



NOTE: IN WIND AREAS OF VERY HIGH AND ABOVE, SEALANT MUST BE INSTALLED BETWEEN UNDERSIDE OF THE HEAD FLASHING AND TOP OF THE WINDOW HEAD FLANGE

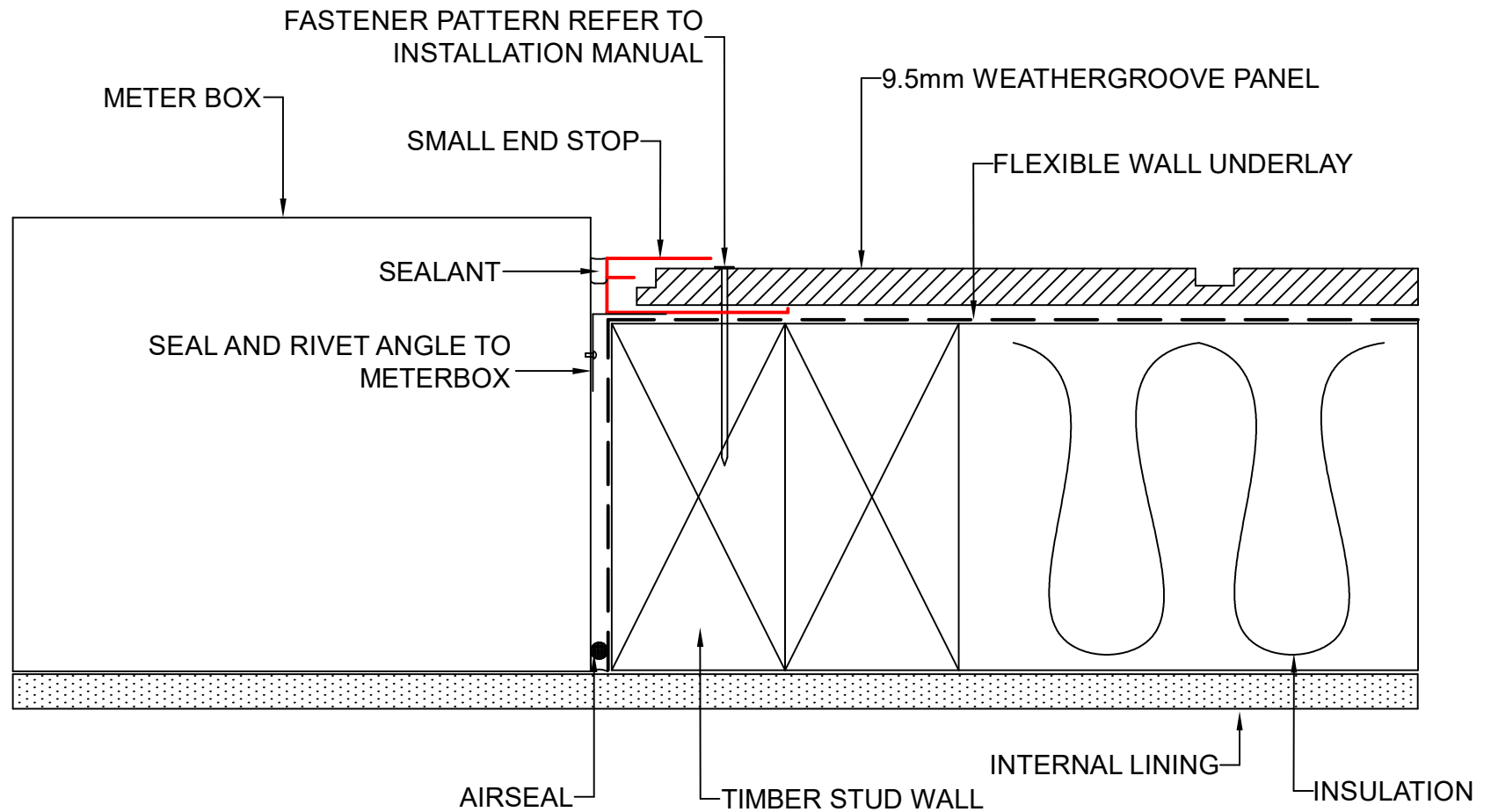
	DRAWING NAME:	SCALE:	DRAWN BY:	CHECKED BY:	DATE:	DRAWING No.:	SHT SIZE
	DIRECT FIX INSTALLATION - WINDOW SILL (WEATHERGROOVE RANGE)	NTS	A.MOATE	R.STUART	07.09.22	NZ-WG-DF-12	A4

These drawings are for information only. They do not contain full details required for construction and must be used in conjunction with the current issue Weathertex Installation Manual, New Zealand Building Code and Local Regulations. Weathertex recommends gaining professional advice to ensure the drawings are suitable for your project. Weathertex accepts no liability in respect to the use of these drawings.



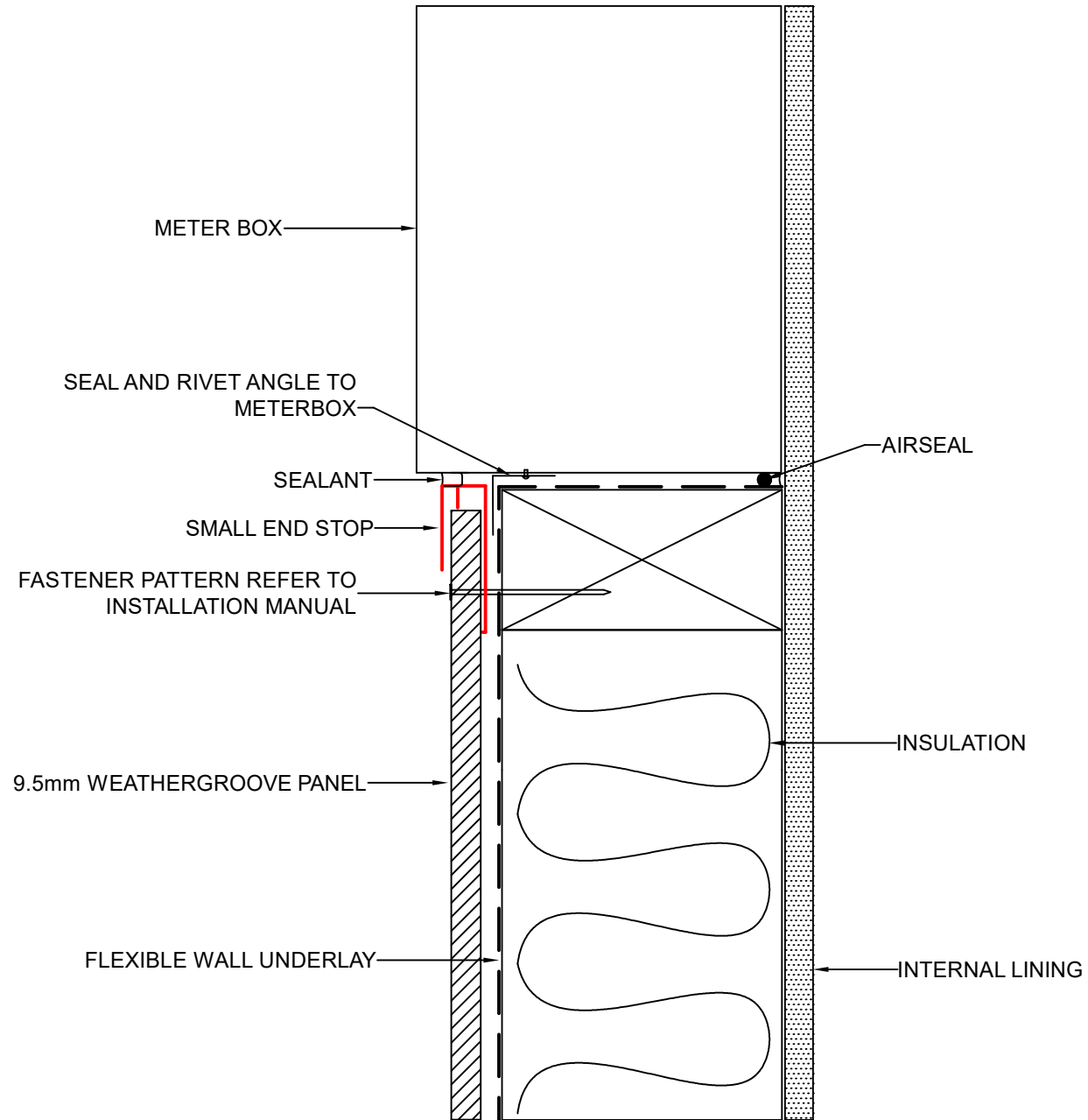
NOTE: IN WIND AREAS OF VERY HIGH AND ABOVE, SEALANT MUST BE INSTALLED BETWEEN UNDERSIDE OF THE HEAD FLASHING AND TOP OF THE WINDOW HEAD FLANGE

	DRAWING NAME:	SCALE:	DRAWN BY:	CHECKED BY:	DATE:	DRAWING No.:	SHT SIZE
	DIRECT FIX INSTALLATION - WINDOW LINTEL (WEATHERGROOVE RANGE)	NTS	A.MOATE	R.STUART	07.09.22	NZ-WG-DF-13	A4



These drawings are for information only. They do not contain full details required for construction and must be used in conjunction with the current issue Weathertex Installation Manual, New Zealand Building Code and Local Regulations. Weathertex recommends gaining professional advice to ensure the drawings are suitable for your project. Weathertex accepts no liability in respect to the use of these drawings.

	DRAWING NAME:	SCALE:	DRAWN BY:	CHECKED BY:	DATE:	DRAWING No.:	SHT SIZE
	DIRECT FIX INSTALLATION - METER BOX JAMB (WEATHERGROOVE RANGE)	NTS	A.MOATE	R.STUART	07.09.22	NZ-WG-DF-14	A4



These drawings are for information only. They do not contain full details required for construction and must be used in conjunction with the current issue Weathertex Installation Manual, New Zealand Building Code and Local Regulations. Weathertex recommends gaining professional advice to ensure the drawings are suitable for your project. Weathertex accepts no liability in respect to the use of these drawings.



DRAWING NAME:
DIRECT FIX INSTALLATION - METER BOX SILL
(WEATHERGROOVE RANGE)

SCALE:

NTS

DRAWN BY:

A.MOATE

CHECKED BY:

R.STUART

DATE:

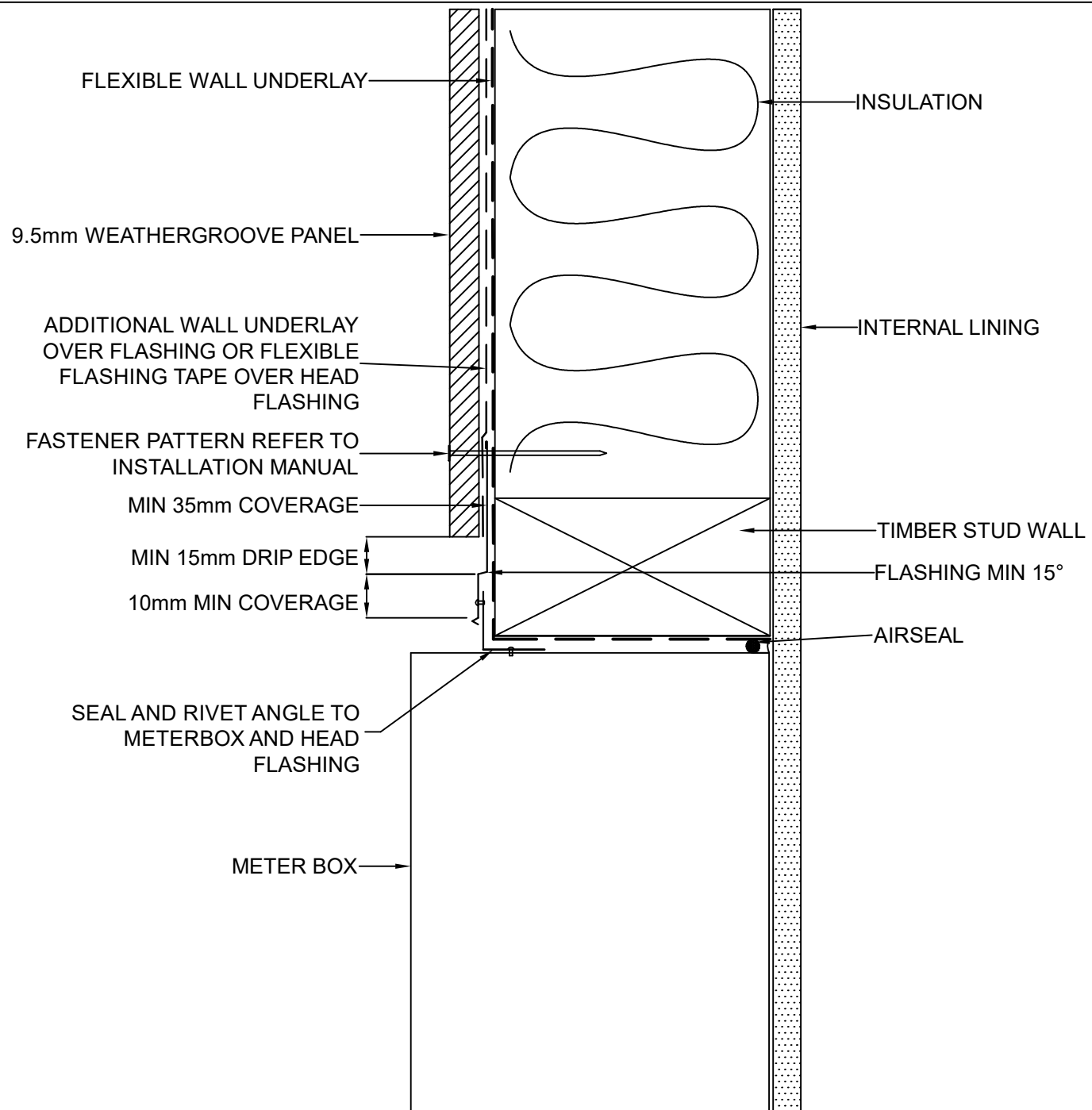
07.09.22

DRAWING No.:

NZ-WG-DF-15

SHT SIZE

A4



These drawings are for information only. They do not contain full details required for construction and must be used in conjunction with the current issue Weathertex Installation Manual, New Zealand Building Code and Local Regulations. Weathertex recommends gaining professional advice to ensure the drawings are suitable for your project. Weathertex accepts no liability in respect to the use of these drawings.



DRAWING NAME:
DIRECT FIX INSTALLATION - METER BOX HEAD
(WEATHERGROOVE RANGE)

SCALE:
NTS

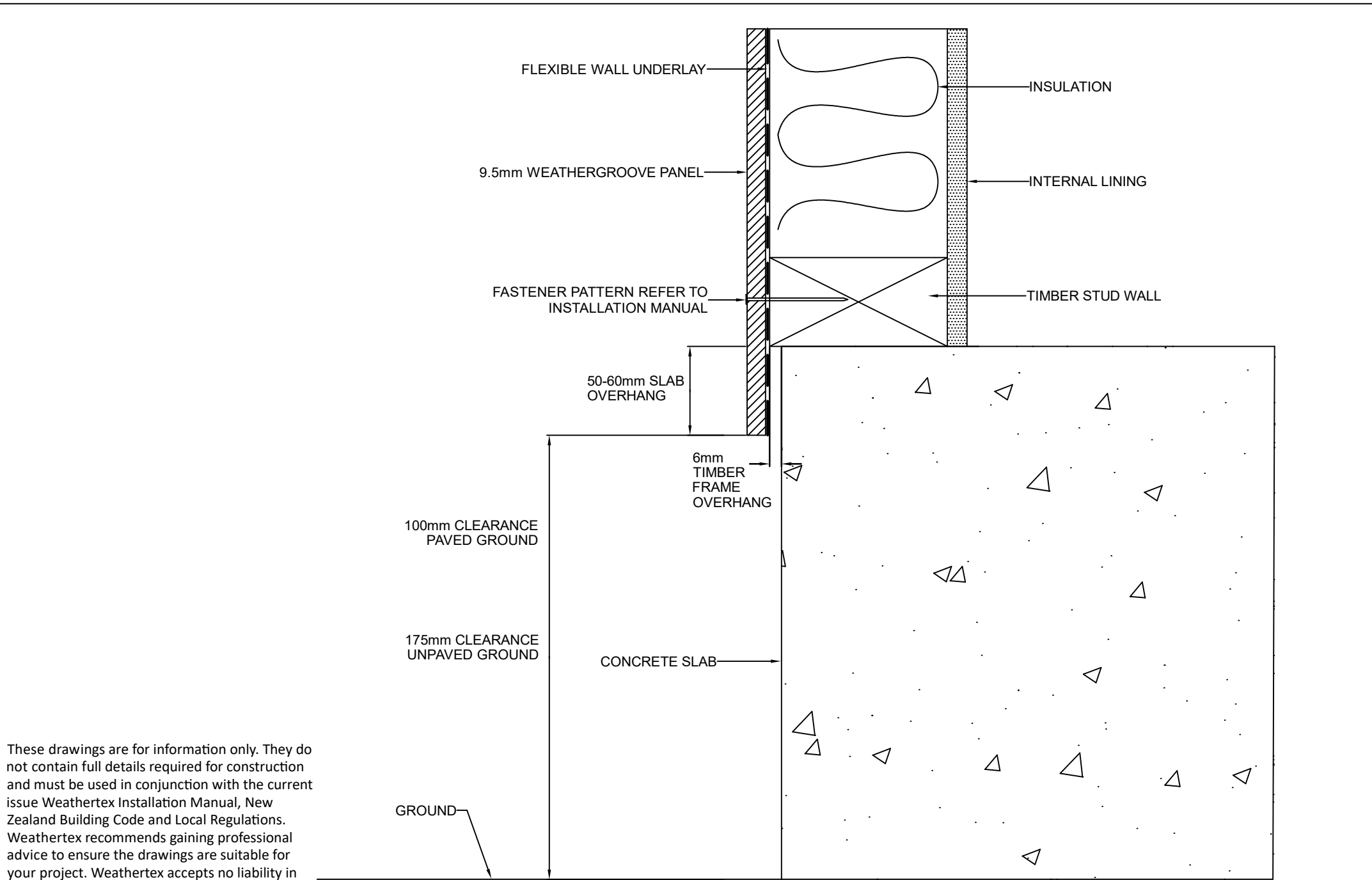
DRAWN BY:
A.MOATE

CHECKED BY:
R.STUART

DATE:
07.09.22

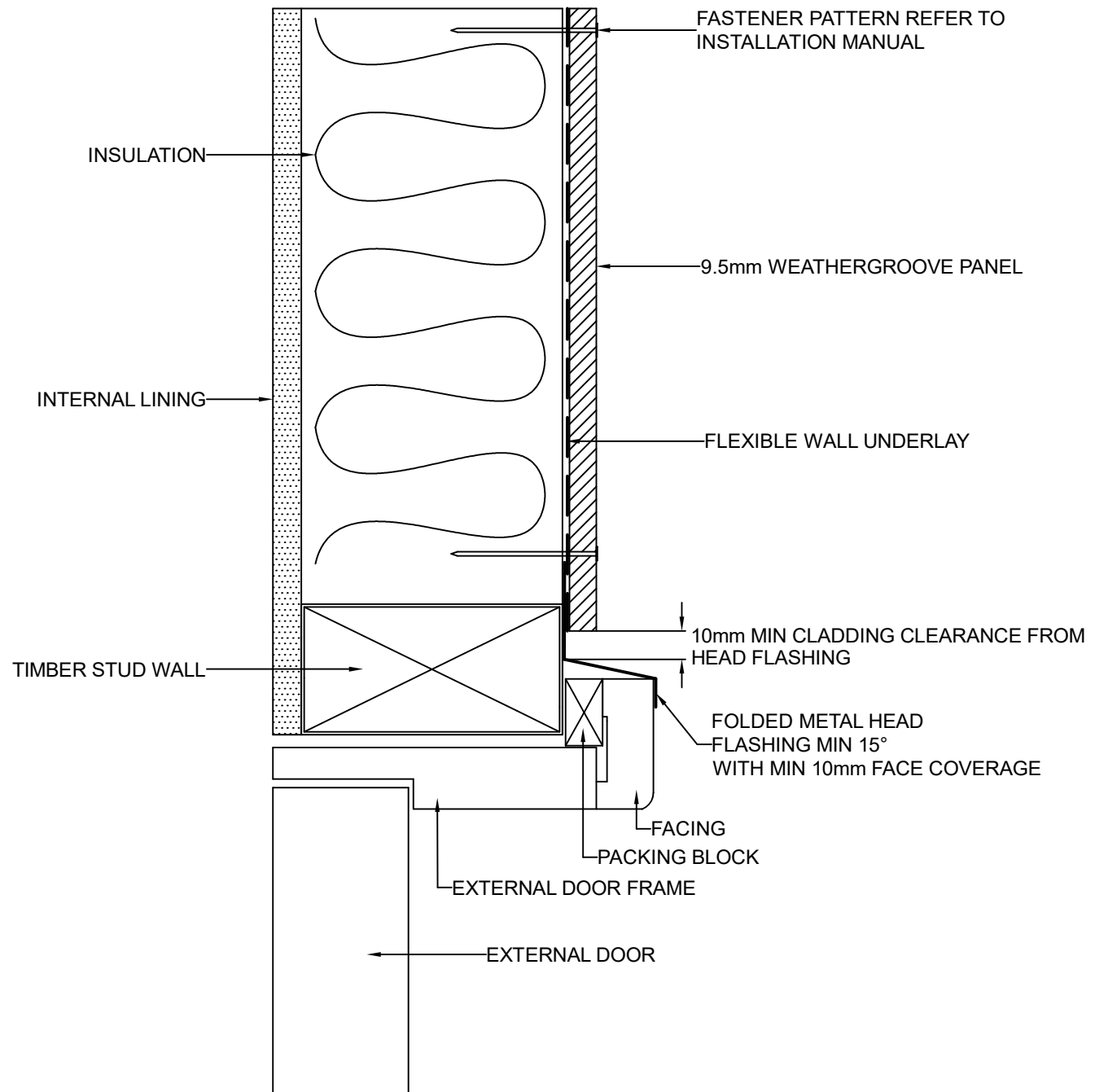
DRAWING No.:
NZ-WG-DF-16

SHT SIZE
A4



These drawings are for information only. They do not contain full details required for construction and must be used in conjunction with the current issue Weathertex Installation Manual, New Zealand Building Code and Local Regulations. Weathertex recommends gaining professional advice to ensure the drawings are suitable for your project. Weathertex accepts no liability in respect to the use of these drawings.

	DRAWING NAME: DIRECT FIX INSTALLATION - GROUND CLEARANCE (WEATHERGROOVE RANGE)	SCALE: NTS	DRAWN BY: A.MOATE	CHECKED BY: R.STUART	DATE: 07.09.22	DRAWING No.: NZ-WG-DF-17	SHT SIZE A4



These drawings are for information only. They do not contain full details required for construction and must be used in conjunction with the current issue Weathertex Installation Manual, New Zealand Building Code and Local Regulations. Weathertex recommends gaining professional advice to ensure the drawings are suitable for your project. Weathertex accepts no liability in respect to the use of these drawings.



DRAWING NAME:
DIRECT FIX INSTALLATION - DOOR HEAD
(WEATHERGROOVE RANGE)

SCALE:
NTS

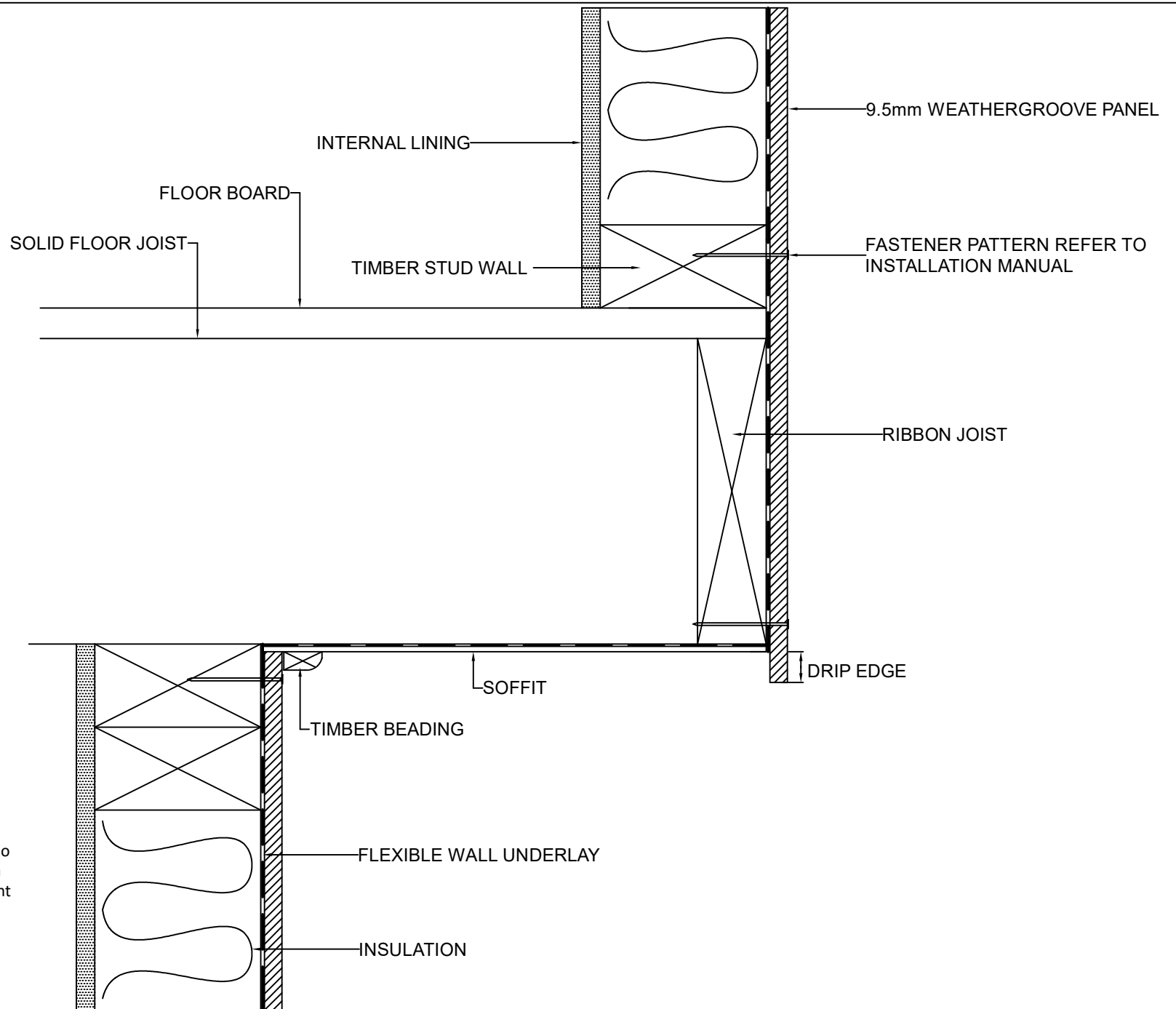
DRAWN BY:
A.MOATE

CHECKED BY:
R.STUART

DATE:
07.09.22

DRAWING No.:
NZ-WG-DF-18

SHT SIZE
A4



These drawings are for information only. They do not contain full details required for construction and must be used in conjunction with the current issue Weathertex Installation Manual, New Zealand Building Code and Local Regulations. Weathertex recommends gaining professional advice to ensure the drawings are suitable for your project. Weathertex accepts no liability in respect to the use of these drawings.



DRAWING NAME:
DIRECT FIX INSTALLATION - CANTILEVER ROOF
(WEATHERGROOVE RANGE)

SCALE:
NTS

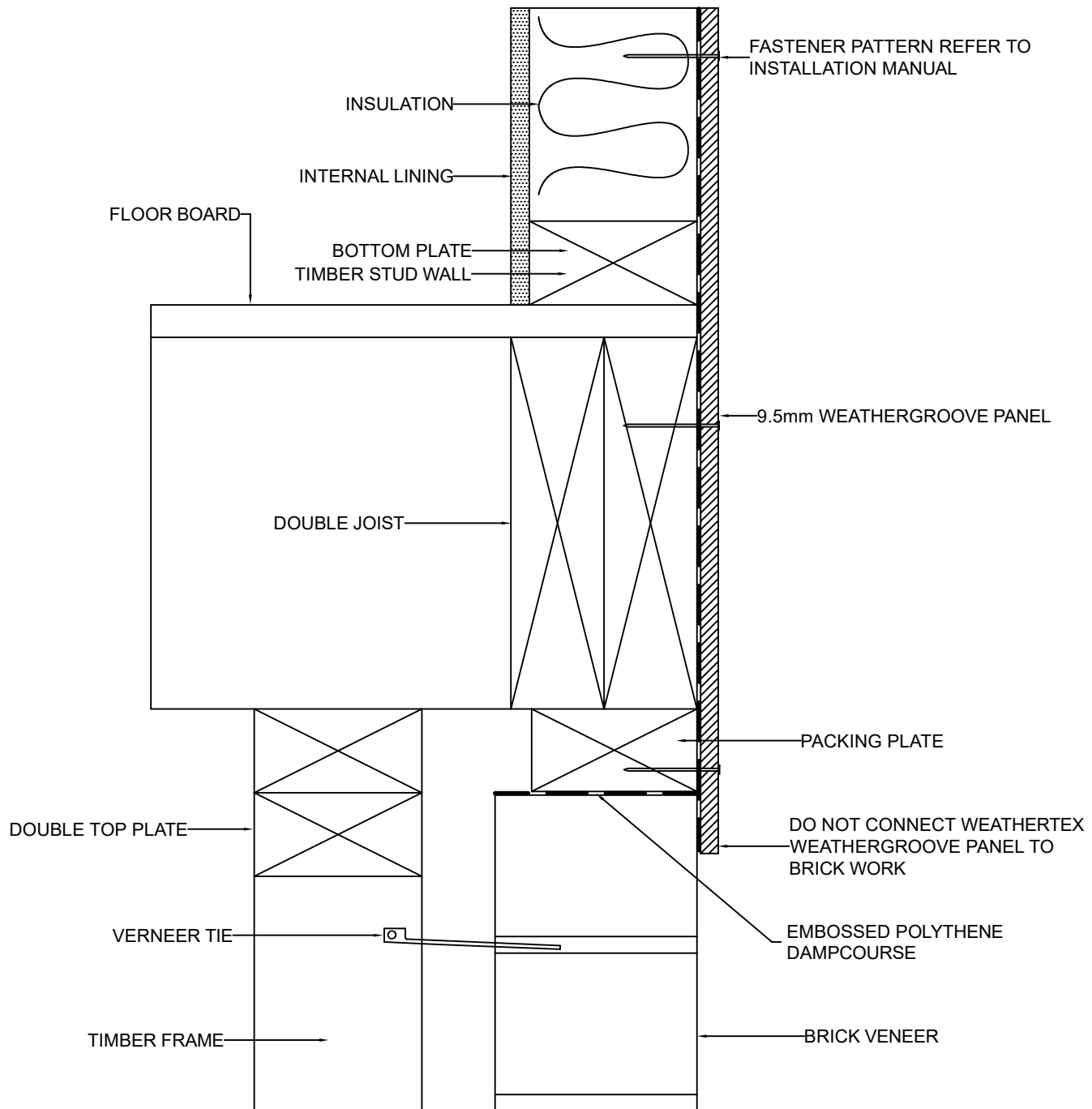
DRAWN BY:
A.MOATE

CHECKED BY:
R.STUART

DATE:
07.09.22

DRAWING No.:
NZ-WG-DF-19

SHT SIZE
A4



These drawings are for information only. They do not contain full details required for construction and must be used in conjunction with the current issue Weathertex Installation Manual, New Zealand Building Code and Local Regulations. Weathertex recommends gaining professional advice to ensure the drawings are suitable for your project. Weathertex accepts no liability in respect to the use of these drawings.



DRAWING NAME:
DIRECT FIX INSTALLATION - FLUSH WITH VENEER
(WEATHERGROOVE RANGE)

SCALE:
NTS

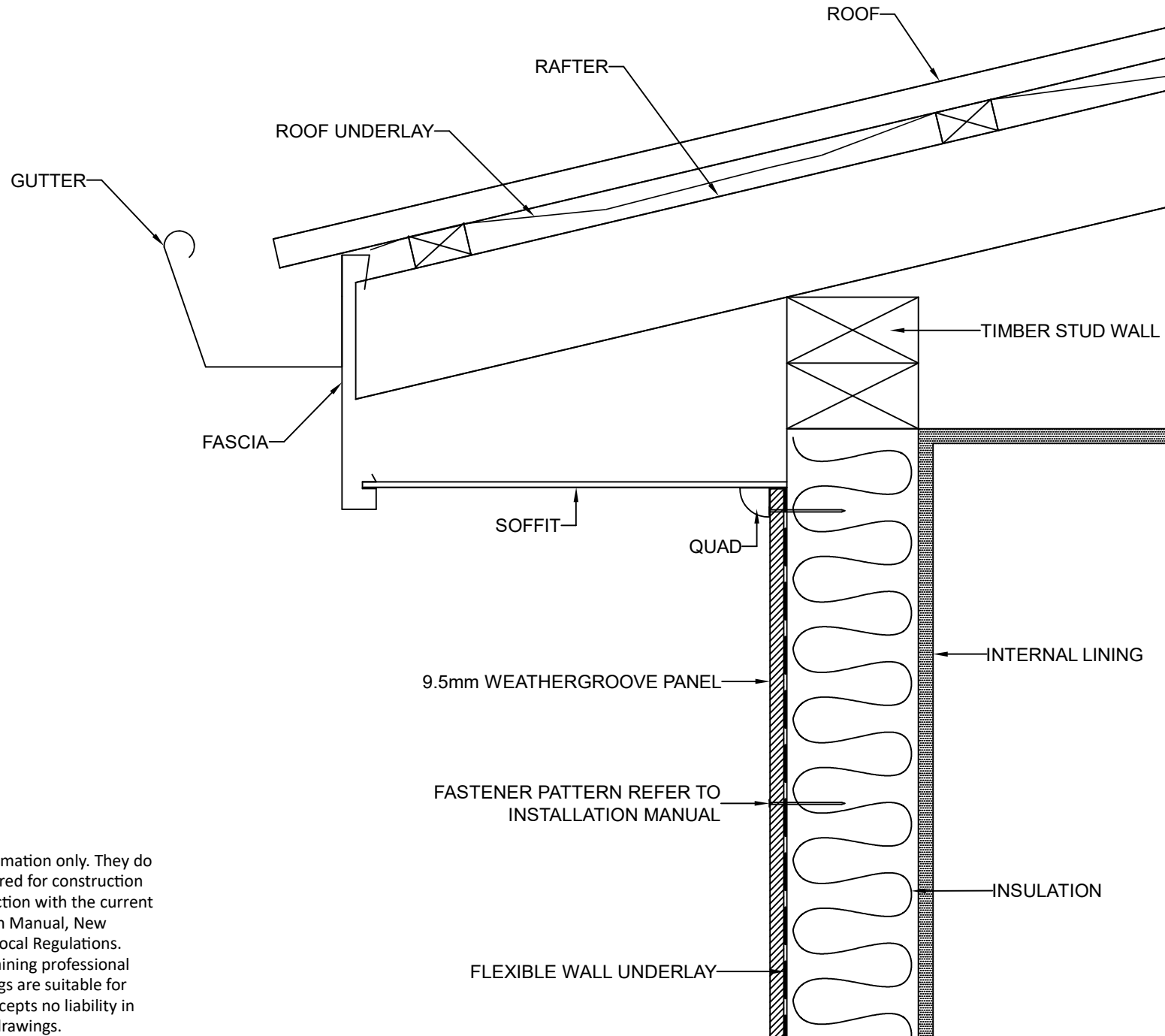
DRAWN BY:
A.MOATE

CHECKED BY:
R.STUART

DATE:
07.09.22

DRAWING No.:
NZ-WG-DF-20

SHT SIZE
A4



These drawings are for information only. They do not contain full details required for construction and must be used in conjunction with the current issue Weathertex Installation Manual, New Zealand Building Code and Local Regulations. Weathertex recommends gaining professional advice to ensure the drawings are suitable for your project. Weathertex accepts no liability in respect to the use of these drawings.



DRAWING NAME:
DIRECT FIX INSTALLATION - SOFFIT
(WEATHERGROOVE RANGE)

SCALE:
NTS

DRAWN BY:
A.MOATE

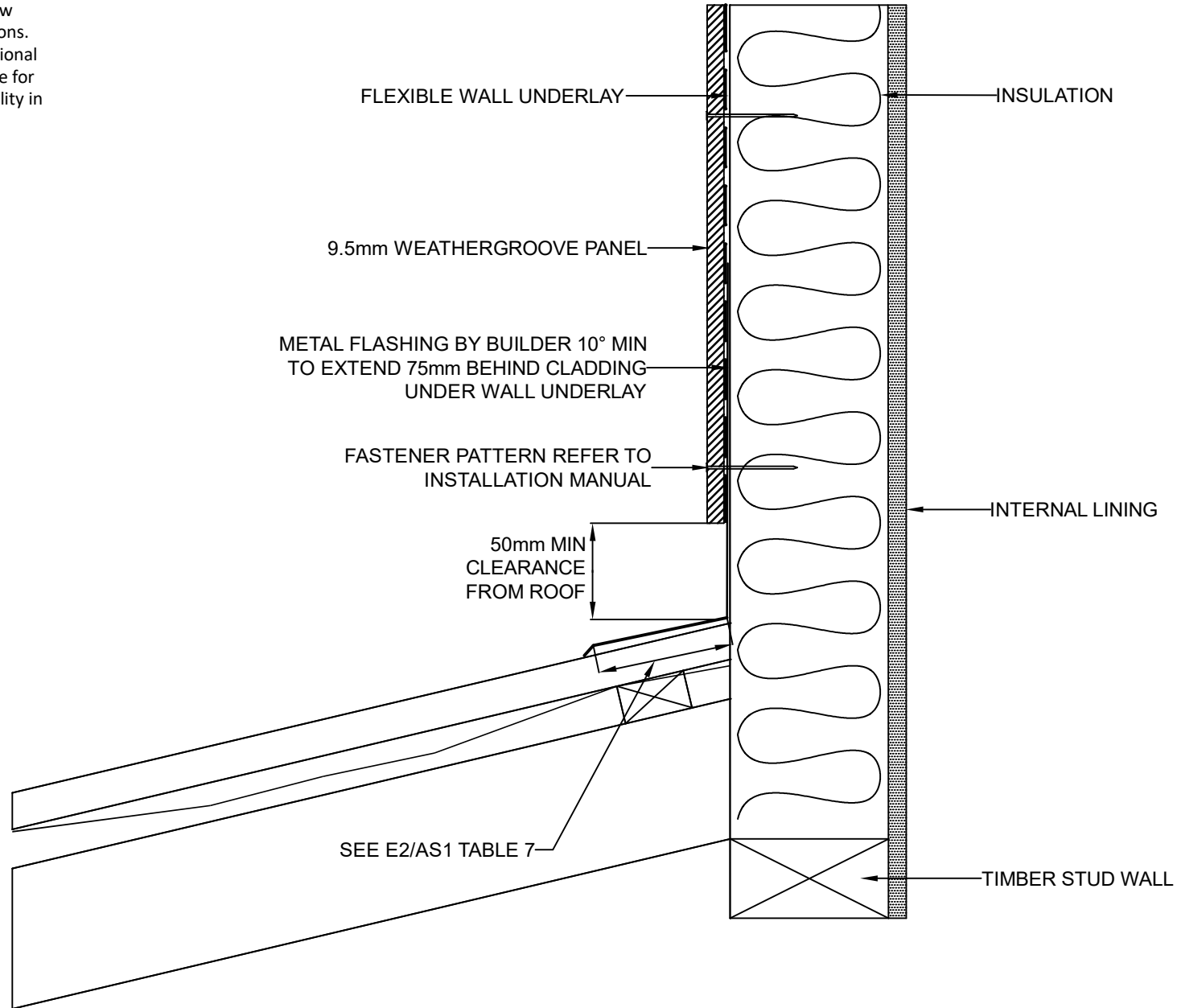
CHECKED BY:
R.STUART

DATE:

DRAWING No.:
NZ-WG-DF-21

SHT SIZE
A4

These drawings are for information only. They do not contain full details required for construction and must be used in conjunction with the current issue Weathertex Installation Manual, New Zealand Building Code and Local Regulations. Weathertex recommends gaining professional advice to ensure the drawings are suitable for your project. Weathertex accepts no liability in respect to the use of these drawings.



DRAWING NAME:
DIRECT FIX INSTALLATION - ROOF CLEARANCE
(WEATHERGROOVE RANGE)

SCALE:
NTS

DRAWN BY:
A.MOATE

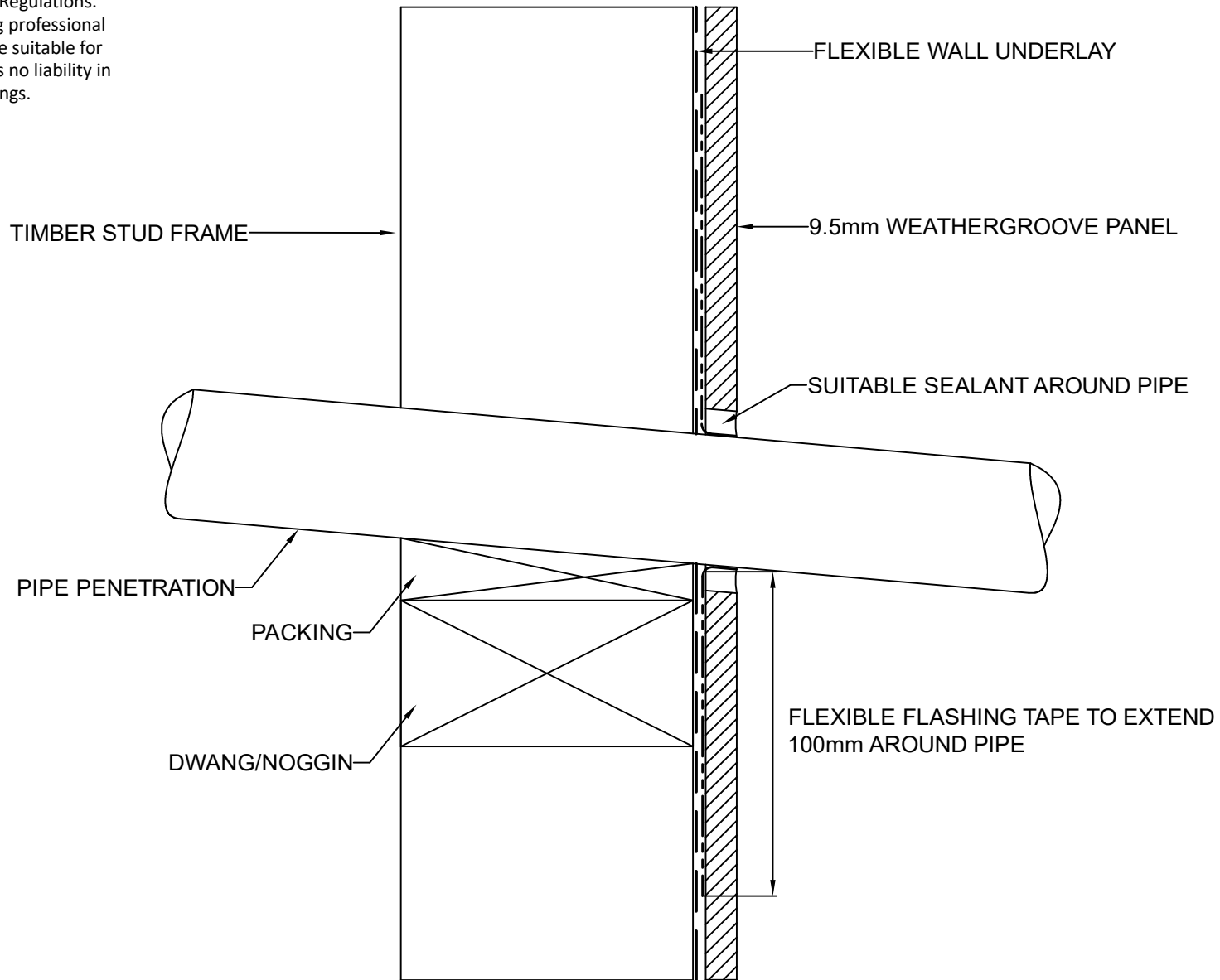
CHECKED BY:
R.STUART

DATE:
07.09.22

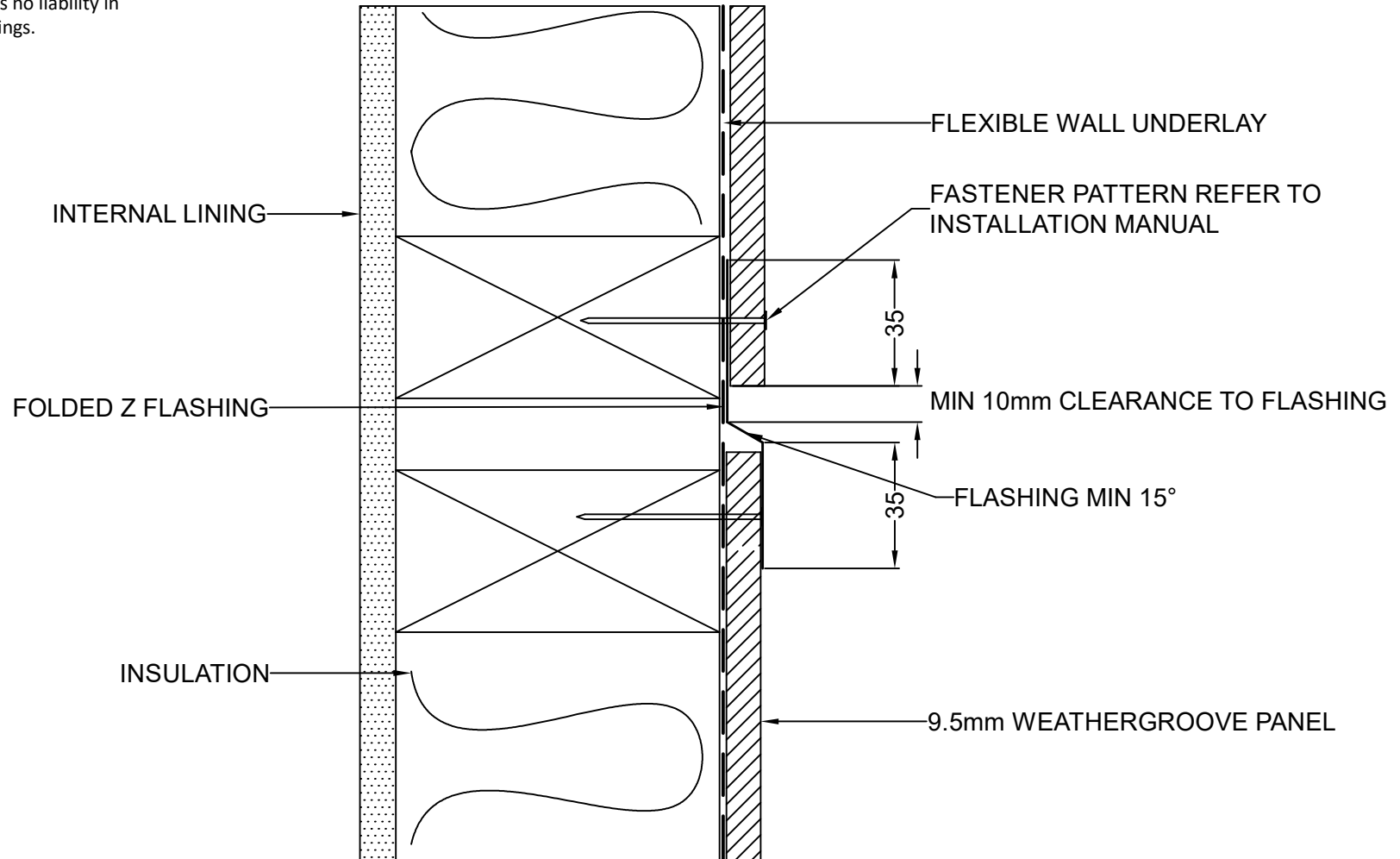
DRAWING No.:
NZ-WG-DF-22

SHT SIZE
A4

These drawings are for information only. They do not contain full details required for construction and must be used in conjunction with the current issue Weathertex Installation Manual, New Zealand Building Code and Local Regulations. Weathertex recommends gaining professional advice to ensure the drawings are suitable for your project. Weathertex accepts no liability in respect to the use of these drawings.



These drawings are for information only. They do not contain full details required for construction and must be used in conjunction with the current issue Weathertex Installation Manual, New Zealand Building Code and Local Regulations. Weathertex recommends gaining professional advice to ensure the drawings are suitable for your project. Weathertex accepts no liability in respect to the use of these drawings.



DRAWING NAME:
DIRECT FIX INSTALLATION - INTERSTOREY JUNCTION
(WEATHERGROOVE RANGE)

SCALE:
NTS

DRAWN BY:
A.MOATE

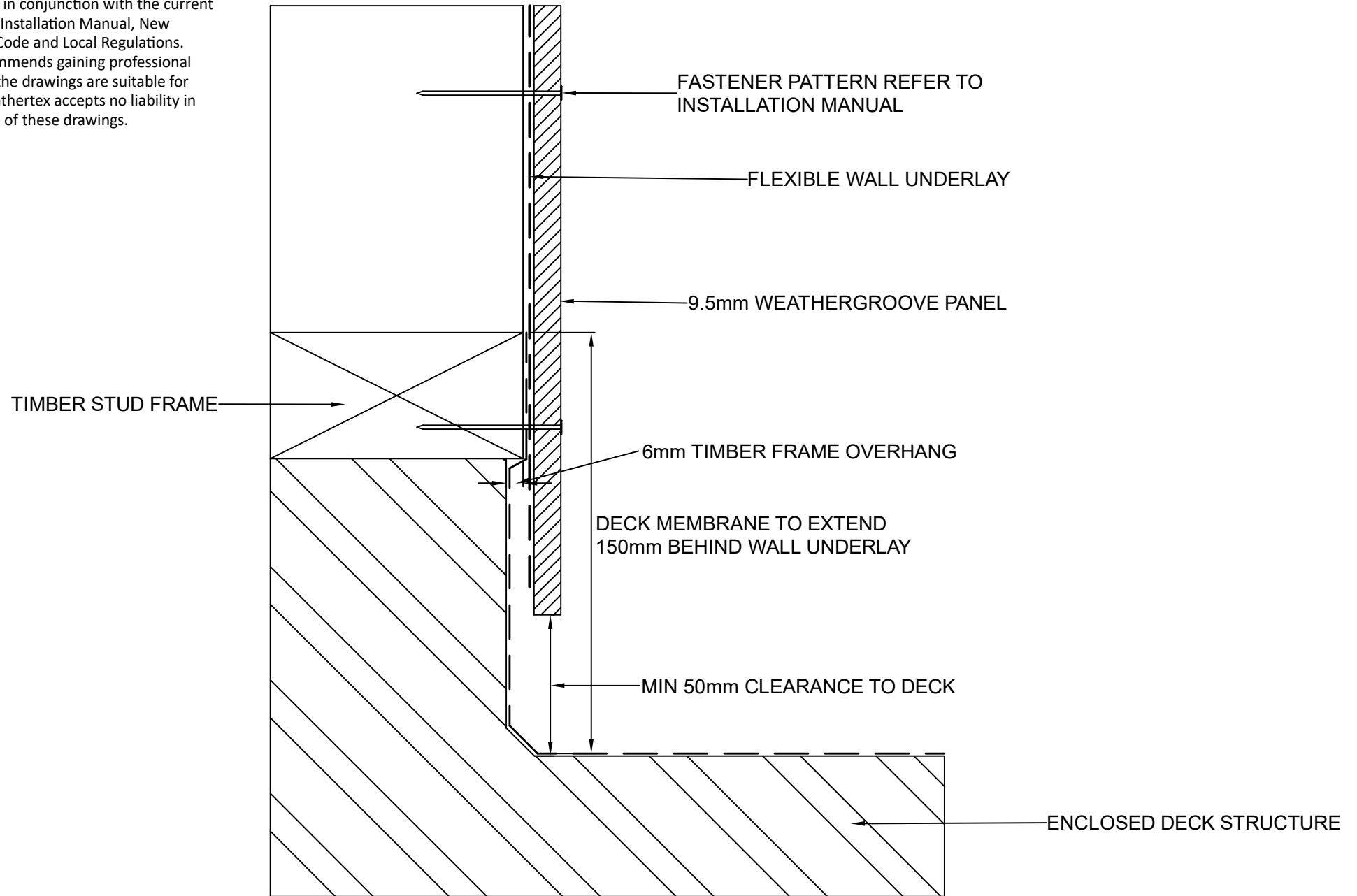
CHECKED BY:
R.STUART

DATE:
07.09.22

DRAWING No.:
NZ-WG-DF-24

SHT SIZE
A4

These drawings are for information only. They do not contain full details required for construction and must be used in conjunction with the current issue Weathertex Installation Manual, New Zealand Building Code and Local Regulations. Weathertex recommends gaining professional advice to ensure the drawings are suitable for your project. Weathertex accepts no liability in respect to the use of these drawings.



DRAWING NAME:
DIRECT FIX INSTALLATION - MEMBRANE DECK
(WEATHERGROOVE RANGE)

SCALE:

NTS

DRAWN BY:

A.MOATE

CHECKED BY:

R.STUART

DATE:

07.09.22

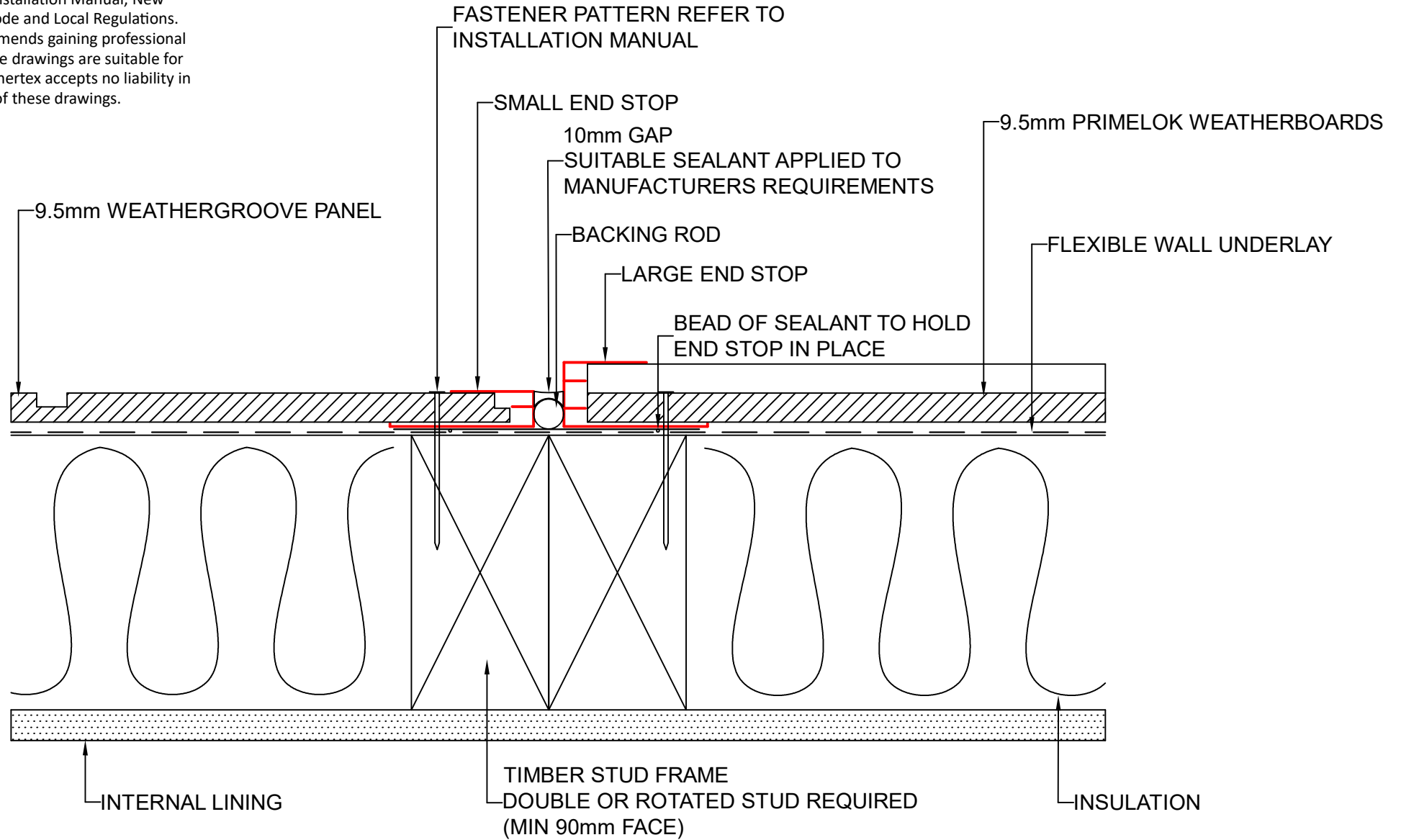
DRAWING No.:

NZ-WG-DF-25

SHT SIZE

A4

These drawings are for information only. They do not contain full details required for construction and must be used in conjunction with the current issue Weathertex Installation Manual, New Zealand Building Code and Local Regulations. Weathertex recommends gaining professional advice to ensure the drawings are suitable for your project. Weathertex accepts no liability in respect to the use of these drawings.



DRAWING NAME:
DIRECT FIX INSTALLATION - BACK TO BACK END STOP
(WEATHERGROOVE RANGE)

SCALE:
NTS

DRAWN BY:
A.MOATE

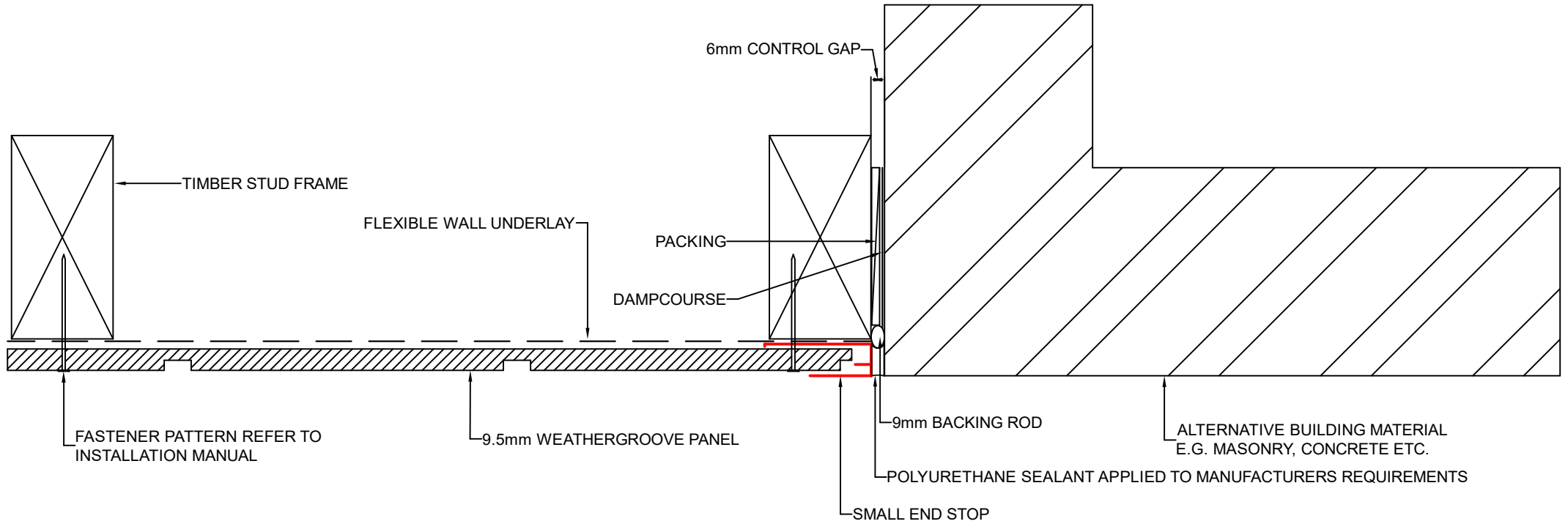
CHECKED BY:
R.STUART

DATE:
07.09.22

DRAWING No.:
NZ-WG-DF-26

SHT SIZE
A4

These drawings are for information only. They do not contain full details required for construction and must be used in conjunction with the current issue Weathertex Installation Manual, New Zealand Building Code and Local Regulations. Weathertex recommends gaining professional advice to ensure the drawings are suitable for your project. Weathertex accepts no liability in respect to the use of these drawings.



DRAWING NAME:
DIRECT FIX INSTALLATION - END STOP INTO ALTERNATIVE MANUAL
(WEATHERGROOVE RANGE)

SCALE:
NTS

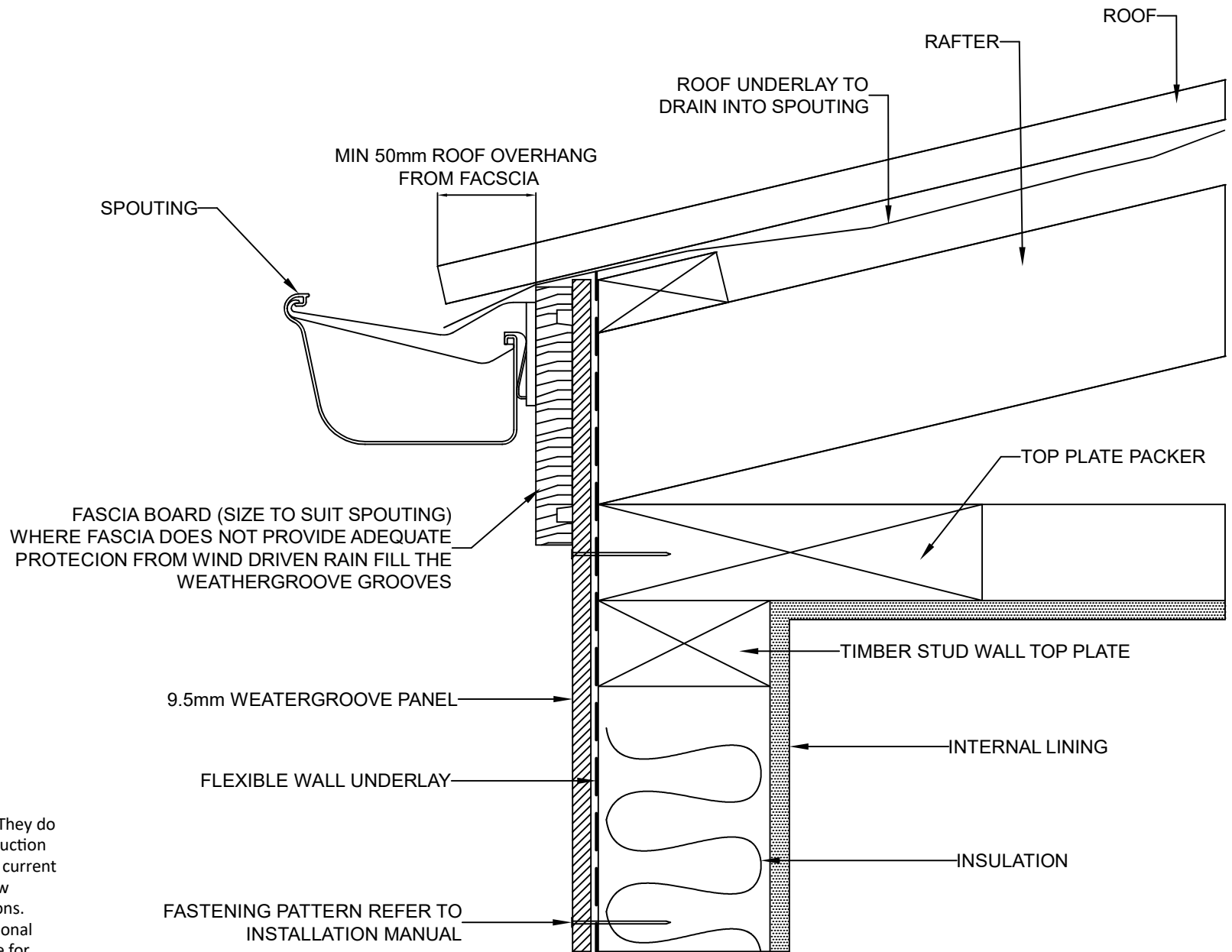
DRAWN BY:
A.MOATE

CHECKED BY:
R.STUART

DATE:
07.09.22

DRAWING No.:
NZ-WG-DF-27

SHT SIZE
A4



These drawings are for information only. They do not contain full details required for construction and must be used in conjunction with the current issue Weathertex Installation Manual, New Zealand Building Code and Local Regulations. Weathertex recommends gaining professional advice to ensure the drawings are suitable for your project. Weathertex accepts no liability in respect to the use of these drawings.



DRAWING NAME:
DIRECT FIX INSTALLATION - NO SOFFIT
(WEATHERGROOVE RANGE)

SCALE:
NTS

DRAWN BY:
A.MOATE

CHECKED BY:
R.STUART

DATE:

DRAWING No.:
NZ-WG-DF-28

SHT SIZE
A4